

DUAL 5V REGULATOR WITH RESET

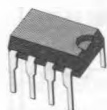
PRELIMINARY DATA

- OUTPUT CURRENTS: $I_{O1} = 50\text{mA}$
 $I_{O2} = 100\text{mA}$
- FIXED PRECISION OUTPUT VOLTAGE
 $5\text{V} \pm 2\%$
- RESET FUNCTION CONTROLLED BY INPUT VOLTAGE AND OUTPUT 1 VOLTAGE
- RESET FUNCTION EXTERNALLY PROGRAMMABLE TIMING
- RESET OUTPUT LEVEL RELATED TO OUTPUT 2
- OUTPUT 2 INTERNALLY SWITCHED WITH ACTIVE DISCHARGING
- LOW LEAKAGE CURRENT, LESS THAN $1\mu\text{A}$ AT OUTPUT 1
- LOW QUIESCENT CURRENT (INPUT 1)
- INPUT OVERVOLTAGE PROTECTION UP TO 60V

- RESET OUTPUT NORMALLY HIGH
- OUTPUT TRANSISTORS SOA PROTECTION
- SHORT CIRCUIT AND THERMAL OVERLOAD PROTECTION

The L4904A is a monolithic low drop dual 5V regulator designed mainly for supplying micro-processor systems.

Reset and data save functions during switch on/off can be realized.



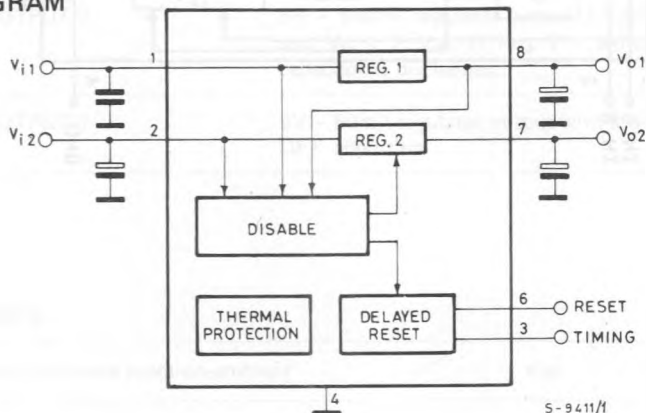
Minidip Plastic

ORDERING NUMBER: L4904A

ABSOLUTE MAXIMUM RATINGS

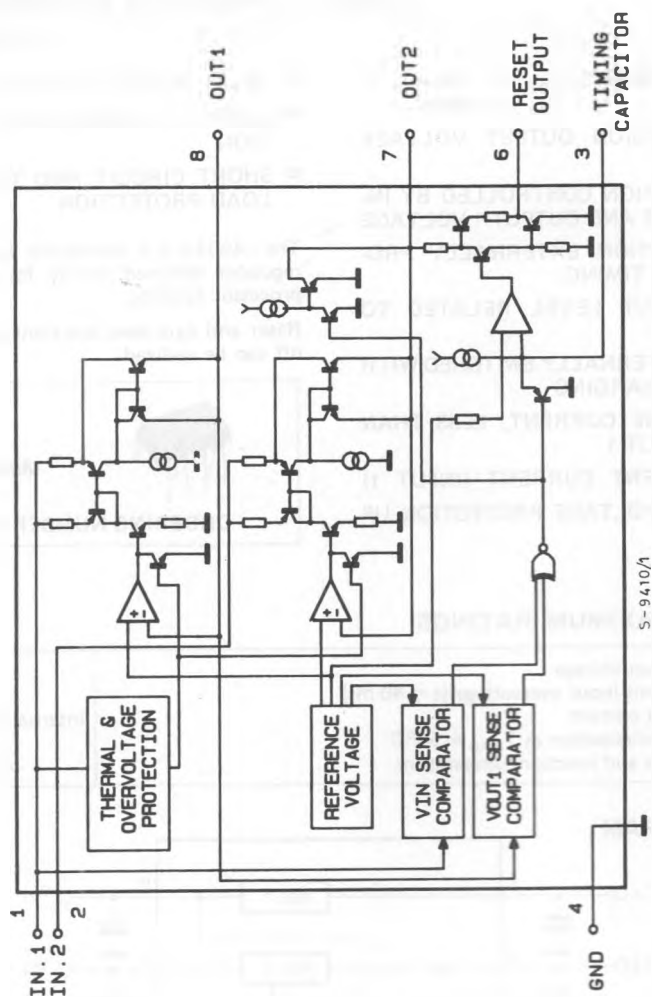
V_{IN}	DC input voltage	24	V
	Transient input overvoltage ($t = 40\text{ ms}$)	60	V
I_O	Output current	internally limited	
P_{tot}	Power dissipation at $T_{amb} = 50^\circ\text{C}$	1	W
T_J	Storage and junction temperature	-40 to 150	$^\circ\text{C}$

BLOCK DIAGRAM



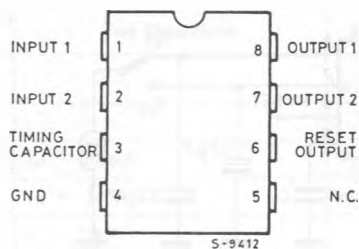
S-9411/1

SCHEMATIC DIAGRAM



CONNECTION DIAGRAM

(Top view)



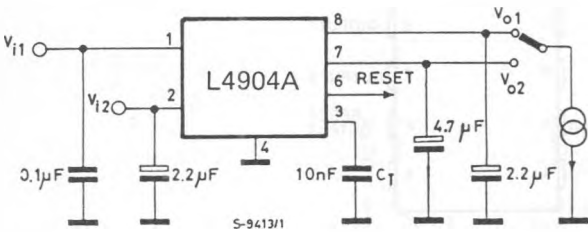
PIN FUNCTIONS

N°	NAME	FUNCTION
1	INPUT 1	Low quiescent current 50mA regulator input.
2	INPUT 2	100mA regulator input.
3	TIMING CAPACITOR	If Reg. 2 is switched-ON the delay capacitor is charged with a $10\mu\text{A}$ constant current. When Reg. 2 is switched-OFF the delay capacitor is discharged.
4	GND	Common ground.
6	RESET OUTPUT	When pin 3 reaches 5V the reset output is switched high. Therefore $t_{RD} = C_t \left(\frac{5V}{10\mu A} \right)$; $t_{RD} \text{ (ms)} = C_t \text{ (nF)}$.
7	OUTPUT 2	5V - 100mA regulator output. Enabled if $V_{O1} > V_{RT}$ and $V_{IN2} > V_{IT}$. If Reg. 2 is switched-OFF the C_{02} capacitor is discharged.
8	OUTPUT 1	5V - 50mA regulator output with low leakage in switch-OFF condition.

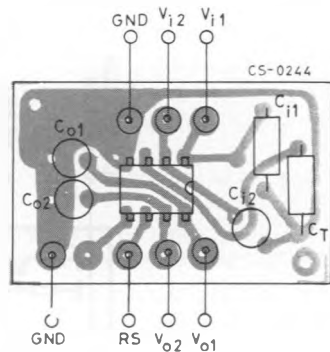
THERMAL DATA

$R_{th J-amb}$	Thermal resistance junction-ambient	max	100	$^{\circ}\text{C/W}$
----------------	-------------------------------------	-----	-----	----------------------

TEST CIRCUIT



P.C. board and components layout of the test circuit (1 : 1 scale)



ELECTRICAL CHARACTERISTICS ($V_{IN} = 14,4V$, $T_{amb} = 25^{\circ}C$ unless otherwise specified)

Parameter	Test Conditions	Min.	Typ.	Max.	Unit
V_i DC operating input voltage				20	V
V_{01} Output voltage 1	R load 1K Ω	4.95	5.05	5.15	V
V_{02H} Output voltage 2 HIGH	R load 1K Ω	$V_{01} - 0.1$	5	V_{01}	V
V_{02L} Output voltage 2 LOW	$I_{02} = -5mA$		0.1		V
I_{01} Output current 1	$\Delta V_{01} = -100mV$	50			mA
I_{L01} Leakage output 1 current	$V_{IN} = 0$ $V_{01} < 3V$			1	μA
I_{02} Output current 2	$\Delta V_{02} = -100mV$	100			mA
V_{I01} Output 1 dropout voltage (*)	$I_{01} = 10mA$ $I_{01} = 50mA$		0.7 0.75	0.8 0.9	V V
V_{IT} Input threshold voltage		$V_{01} + 1.2$	6.4	$V_{01} + 1.7$	V
V_{ITH} Input threshold voltage hyst.			250		mV
ΔV_{01} Line regulation	$7V < V_{IN} < 18V$ $I_{01} = 5mA$ $I_{02} = 5mA$		5	50	mV
ΔV_{02} Line regulation 2			5	50	
ΔV_{01} Load regulation 1	$V_{IN} = 8V$ $5mA < I_{01} < 50mA$ $5mA < I_{02} < 100mA$		5	20	mV
ΔV_{02} Load regulation 2			10	50	
I_Q Quiescent current	$0 < V_{IN} < 13V$ $7V < V_{IN} < 13V$ $I_{02} = I_{01} \leq 5mA$		4.5 1.6	6.5 3.5	mA mA
I_{Q1} Quiescent current 1	$6.3V < V_{IN1} < 13V$ $V_{IN2} = 0$ $I_{01} \leq 5mA$ $I_{02} = 0$		0.6	0.9	mA

ELECTRICAL CHARACTERISTICS (continued)

Parameter	Test Conditions	Min.	Typ.	Max.	Unit
V_{RT} Reset threshold voltage *		$V_{O2}-0.15$	4.9	$V_{O2}-0.05$	V
V_{RTH} Reset threshold hysteresis		30	50	80	mV
V_{RH} Reset output voltage HIGH	$I_R = 500\mu A$	$V_{O2}-1$	4.12	V_{O2}	V
V_{RL} Reset output voltage LOW	$I_R = -5mA$		0.25	0.4	V
t_{RD} Reset pulse delay	$C_t = 10nF$	3		11	ms
t_d Timing capacitor discharge time	$C_t = 10nF$			20	μs
$\frac{\Delta V_{O1}}{\Delta T}$ Thermal drift	$-20^\circ C \leq T_{amb} \leq 125^\circ C$		0.3 -0.8		mV/ $^\circ C$
$\frac{\Delta V_{O2}}{\Delta T}$ Thermal drift	$-20^\circ C \leq T_{amb} \leq 125^\circ C$		0.3 -0.8		mV/ $^\circ C$
SVR1 Supply voltage rejection	$I_O = 50mA$ $f = 100Hz$ $V_R = 0.5V$	50	84		dB
SVR2 Supply voltage rejection	$I_O = 100mA$	50	80		dB
T_{JSD} Thermal shut down			150		$^\circ C$

* The dropout voltage is defined as the difference between the input and the output voltage when the output voltage is lowered of 25mV under constant output current condition.

APPLICATION INFORMATION

In power supplies for μP systems it is necessary to provide power continuously to avoid loss of information in memories and in time of day clocks, or to save data when the primary supply is removed. The L4904A makes it very easy to supply such equipments; it provides two voltage regulators (booth 5V high precision) with separate inputs plus a reset output for the data save function.

CIRCUIT OPERATION (see Fig. 1)

After switch on Reg. 1 saturates until V_{O1} rises to the nominal value.

When the input 2 reaches V_{IT} and the output 1 is higher than V_{RT} the output 2 (V_{O2}) switches on and the reset output (V_R) also goes high after a programmable time T_{RD} (timing capacitor).

V_{O2} and V_R are switched together at low level when one of the following conditions occurs:

- an input overvoltage

- an overload on the output 1 ($V_{O1} < V_{RT}$);
- a switch off ($V_{IN} < V_{IT} - V_{ITH}$);

and they start again as before when the condition is removed.

An overload on output 2 does not switch Reg. 2, and does not influence Reg. 1.

The V_{O1} output features:

- 5V internal reference without voltage divider between the output and the error comparator;
- very low drop series regulator element utilizing current mirrors;

permit high output impedance and then very low leakage current even in power down conditions.

This output may therefore be used to supply circuits continuously, such as volatile RAMs, allowing the use of a back-up battery. The V_{O1} regulator also features low consumption (0.6mA

CIRCUIT OPERATION (continued)

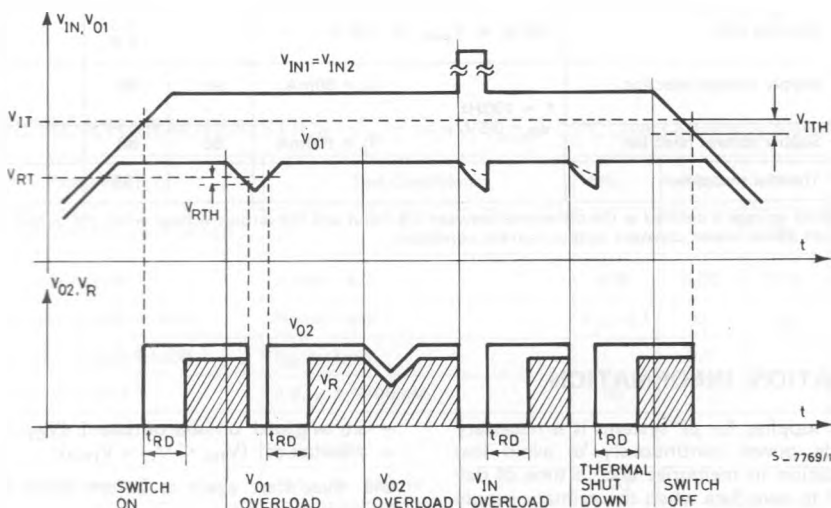
typ.) to minimize battery drain in applications where the V_1 regulator is permanently connected to a battery supply.

The V_{02} output can supply other non essential 5V circuits which may be powered down when the system is inactive, or that must be powered down to prevent uncorrect operation for supply

voltages below the minimum value.

The reset output can be used as a "POWER DOWN INTERRUPT", permitting RAM access only in correct power conditions, or as a "BACK-UP ENABLE" to transfer data into in a NV SHADOW MEMORY when the supply is interrupted.

Fig. 1



APPLICATION SUGGESTIONS

Fig. 2 shows an application circuit for a μP system.

Reg. 1 is permanently connected to a battery and supplies a CMOS time-of-day clock and a CMOS microcomputer chip with volatile memory.

Reg. 2 may be switched OFF when the system is inactive.

Fig. 3 shows the L4904A with a back up battery

on the V_{01} output to maintain a CMOS time-of-day clock and a stand by type C-MOS μP . The reset output makes sure that the RAM is forced into the low consumption stand by state, so the access to memory is inhibit and the back up battery voltage cannot drop so low that memory contents are corrupted.

In this case the main on-off switch disconnects both regulators from the supply battery.

APPLICATION SUGGESTIONS (continued)

Application Circuits of a Microprocessor system (Fig. 2) or with data save battery (Fig. 3). The reset output provide delayed rising front at the turn-off of the regulator 2.

Fig. 2

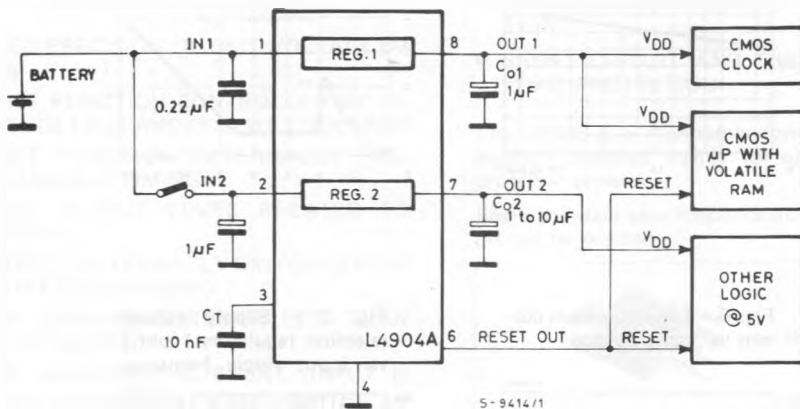
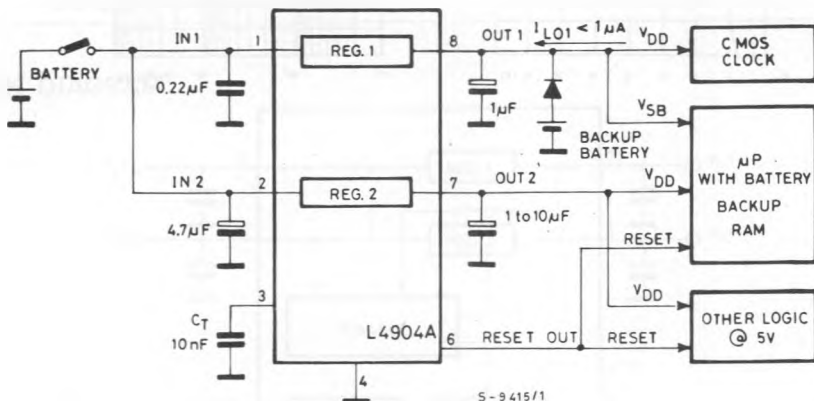


Fig. 3



APPLICATION SUGGESTIONS (continued)

Fig. 4 - Quiescent current (Reg. 1) vs. output current

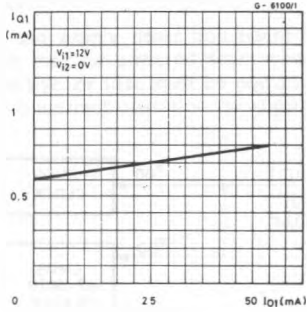


Fig. 5 - Quiescent current (Reg. 1) vs. input voltage

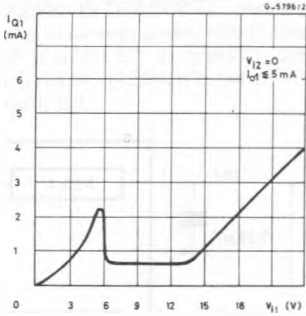


Fig. 6 - Total quiescent current vs. input voltage

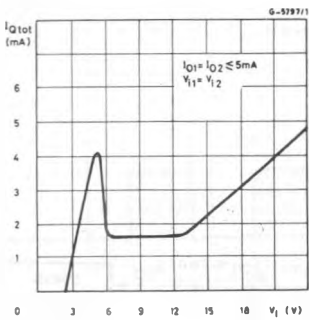


Fig. 7 - Supply voltage rejection regulators 1 and 2 vs. input ripple frequency

