

## LM136-5.0/LM236-5.0/LM336-5.0, 5.0V Reference Diode

### General Description

The LM136-5.0/LM236-5.0/LM336-5.0 integrated circuits are precision 5.0V shunt regulator diodes. These monolithic IC voltage references operate as a low temperature coefficient 5.0V zener with  $0.6\Omega$  dynamic impedance. A third terminal on the LM136-5.0 allows the reference voltage and temperature coefficient to be trimmed easily.

The LM136-5.0 series is useful as a precision 5.0V low voltage reference for digital voltmeters, power supplies or op amp circuitry. The 5.0V makes it convenient to obtain a stable reference from low voltage supplies. Further, since the LM136-5.0 operates as a shunt regulator, it can be used as either a positive or negative voltage reference.

The LM136-5.0 is rated for operation over  $-55^{\circ}\text{C}$  to  $+125^{\circ}\text{C}$  while the LM236-5.0 is rated over a  $-25^{\circ}\text{C}$  to  $+85^{\circ}\text{C}$  temperature range. Both are packaged in a TO-46

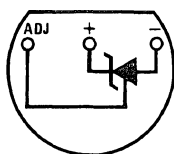
package. The LM336-5.0 is rated for operation over a  $0^{\circ}\text{C}$  to  $+70^{\circ}\text{C}$  temperature range and is available in a TO-92 plastic package. For applications requiring 2.5V see LM136-2.5.

### Features

- Adjustable 4V to 6V
- Low temperature coefficient
- Wide operating current of  $600\mu\text{A}$  to 10 mA
- $0.6\Omega$  dynamic impedance
- $\pm 1\%$  initial tolerance available
- Guaranteed temperature stability
- Easily trimmed for minimum temperature drift
- Fast turn-on
- Three lead transistor package

### Connection Diagrams

**TO-92  
Plastic Package**

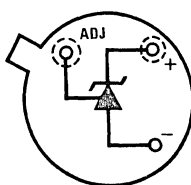


TL/H/5716-4

**Bottom View**

Order Number LM336Z-5.0 or  
LM336BZ-5.0  
See NS Package Number Z03A

**TO-46  
Metal Can Package**

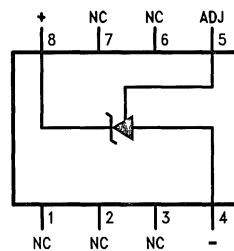


TL/H/5716-5

**Bottom View**

Order Number LM136H-5.0,  
LM236H-5.0, LM136AH-5.0 or  
LM236AH-5.0  
See NS Package Number H03H

**SO Package**

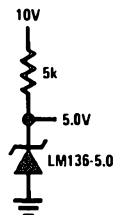


TL/H/5716-7

Order Number LM336M-5.0 or  
LM336BM-5.0  
See NS Package Number M08A

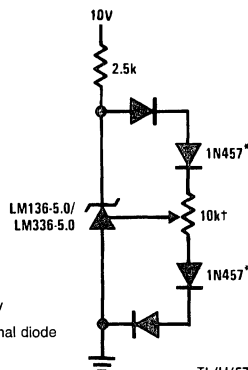
### Typical Applications

**5.0V Reference**



TL/H/5716-1

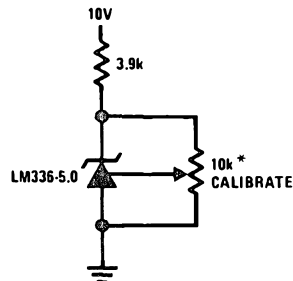
**5.0V Reference with Minimum  
Temperature Coefficient**



†Adjust to 5.00V  
\*Any silicon signal diode

TL/H/5716-15

**Trimmed 4V to 6V Reference  
with Temperature Coefficient  
Independent of Breakdown Voltage**



TL/H/5716-3

\*Does not affect temperature coefficient

## Absolute Maximum Ratings

If Military/Aerospace specified devices are required, please contact the National Semiconductor Sales Office/Distributors for availability and specifications.

|                             |                 |
|-----------------------------|-----------------|
| Reverse Current             | 15mA            |
| Forward Current             | 10mA            |
| Storage Temperature         | -60°C to +150°C |
| Operating Temperature Range |                 |
| LM136-5.0                   | -55°C to +150°C |
| LM236-5.0                   | -25°C to +85°C  |
| LM336-5.0                   | 0°C to +70°C    |

### Soldering Information

|                         |       |
|-------------------------|-------|
| TO-92 Package (10 sec.) | 260°C |
| TO-46 Package (10 sec.) | 300°C |
| SO Package              |       |
| Vapor Phase (60 sec.)   | 215°C |
| Infrared (15 sec.)      | 220°C |

See AN-450 "Surface Mounting Methods and Their Effect on Product Reliability" (appendix D) for other methods of soldering surface mount devices.

## Electrical Characteristics (Note 1)

| Parameter                             | Conditions  | LM136A-5.0/LM236A-5.0<br>LM136-5.0/LM236-5.0 |         |          | LM336B-5.0<br>LM336-5.0 |         |     | Units          |
|---------------------------------------|---|--|---------|----------|-------------------------|---------|-----|----------------|
|                                       |   | Min  | Typ     | Max      | Min                     | Typ     | Max |                |
| Reverse Breakdown Voltage             | $T_A = 25^\circ\text{C}$ , $I_R = 1\text{ mA}$  |  |         |          |                         |         |     | V              |
|                                       | LM136-5.0/LM236-5.0/LM336-5.0   | 4.9  | 5.00    | 5.1      | 4.8                     | 5.00    | 5.2 | V              |
|                                       | LM136A-5.0/LM236A-5.0, LM336B-5.0   | 4.95   | 5.00    | 5.05     | 4.90                    | 5.00    | 5.1 | V              |
| Reverse Breakdown Change With Current | $T_A = 25^\circ\text{C}$ ,<br>$600\text{ }\mu\text{A} \leq I_R \leq 10\text{ mA}$   |  | 6       | 12       |                         | 6       | 20  | mV             |
| Reverse Dynamic Impedance             | $T_A = 25^\circ\text{C}$ , $I_R = 1\text{ mA}$  |  | 0.6     | 1.2      |                         | 0.6     | 2   | $\Omega$       |
| Temperature Stability                 | $V_R$ Adjusted 5.00V<br>$I_R = 1\text{ mA}$ , (Figure 2)  |  |         |          |                         |         |     |                |
|                                       | $0^\circ\text{C} \leq T_A \leq 70^\circ\text{C}$ (LM336-5.0)  |  |         |          |                         | 4       | 12  | mV             |
|                                       | $-25^\circ\text{C} \leq T_A \leq +85^\circ\text{C}$ (LM236-5.0)<br>$-55^\circ\text{C} \leq T_A \leq +125^\circ\text{C}$ (LM136-5.0) |  | 7<br>20 | 18<br>36 |                         |         |     | mV<br>mV<br>mV |
| Reverse Breakdown Change With Current | $600\text{ }\mu\text{A} \leq I_R \leq 10\text{ mA}$   |  | 6       | 17       |                         | 6       | 24  | mV             |
| Adjustment Range                      | Circuit of Figure 1   |  | $\pm 1$ |          |                         | $\pm 1$ |     | V              |
| Reverse Dynamic Impedance             | $I_R = 1\text{ mA}$   |  | 0.8     | 1.6      |                         | 0.8     | 2.5 | $\Omega$       |
| Long Term Stability                   | $T_A = 25^\circ\text{C} \pm 0.1^\circ\text{C}$ , $I_R = 1\text{ mA}$  |  | 20      |          |                         | 20      |     | ppm            |

**Note 1:** Unless otherwise specified, the LM136-5.0 is specified from  $-55^\circ\text{C} \leq T_A \leq +125^\circ\text{C}$ , the LM236-5.0 from  $-25^\circ\text{C} \leq T_A \leq +85^\circ\text{C}$  and the LM336-5.0 from  $0^\circ\text{C} \leq T_A \leq +70^\circ\text{C}$ .

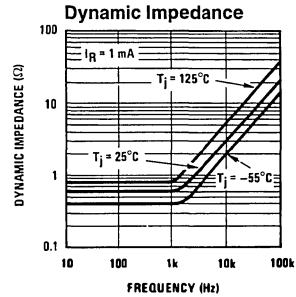
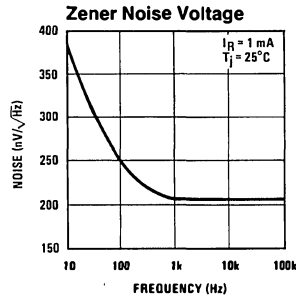
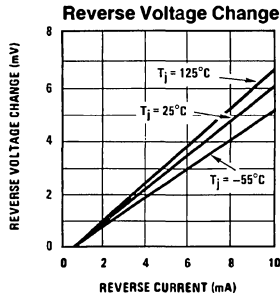
**Note 2:** Temperature stability for the LM336 and LM236 family is guaranteed by design. Design limits are guaranteed (but not 100% percent production tested) over the indicated temperature and supply voltage ranges. These limits are not used to calculate outgoing quality levels. Stability is defined as the maximum change in  $V_{REF}$  from  $25^\circ\text{C}$  to  $T_A(\text{min})$  or  $T_A(\text{max})$ .

**Note 3:** For elevated temperature operation,  $T_J$  max is:

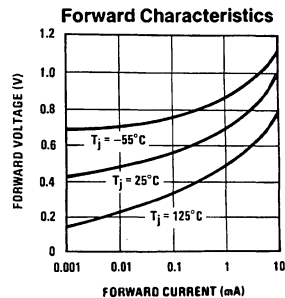
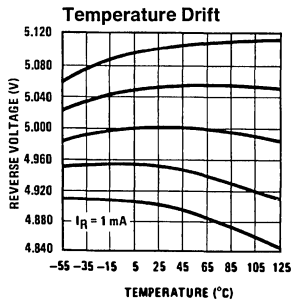
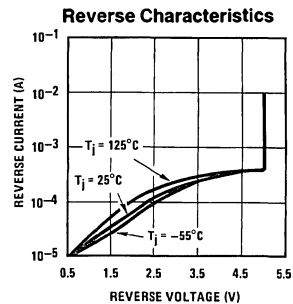
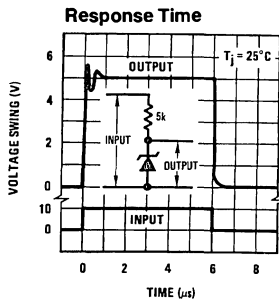
|       |       |
|-------|-------|
| LM136 | 150°C |
| LM236 | 125°C |
| LM336 | 100°C |

| Thermal Resistance                  | TO-92  | TO-46   | SO-8    |
|-------------------------------------|--|---------|---------|
| $\theta_{JA}$ (Junction to Ambient) | 180°C/W (0.4" Leads)<br>170°C/W (0.125" Leads) | 440°C/W | 165°C/W |
| $\theta_{JC}$ (Junction to Case)    | N/A  | 80°C/W  | N/A     |

## Typical Performance Characteristics



TL/H/5716-2



TL/H/5716-8

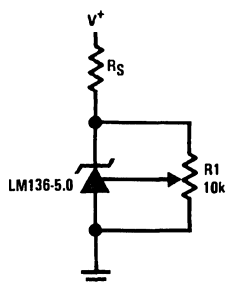
## Application Hints

The LM136-5.0 series voltage references are much easier to use than ordinary zener diodes. Their low impedance and wide operating current range simplify biasing in almost any circuit. Further, either the breakdown voltage or the temperature coefficient can be adjusted to optimize circuit performance.

Figure 1 shows an LM136-5.0 with a 10k potentiometer for adjusting the reverse breakdown voltage. With the addition of R1 the breakdown voltage can be adjusted without affecting the temperature coefficient of the device. The adjustment range is usually sufficient to adjust for both the initial device tolerance and inaccuracies in buffer circuitry.

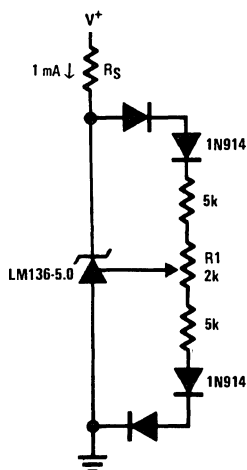
If minimum temperature coefficient is desired, four diodes can be added in series with the adjustment potentiometer as shown in Figure 2. When the device is adjusted to 5.00V the temperature coefficient is minimized. Almost any silicon signal diode can be used for this purpose such as a 1N914, 1N4148 or a 1N457. For proper temperature compensation the diodes should be in the same thermal environment as the LM136-5.0. It is usually sufficient to mount the diodes near the LM136-5.0 on the printed circuit board. The absolute resistance of the network is not critical and any value from 2k to 20k will work. Because of the wide adjustment range, fixed resistors should be connected in series with the pot to make pot setting less critical.

## Application Hints (Continued)



TL/H/5716-9

**FIGURE 1. LM136-5.0 with Pot for Adjustment of Breakdown Voltage (Trim Range =  $\pm 1.0V$  Typical)**

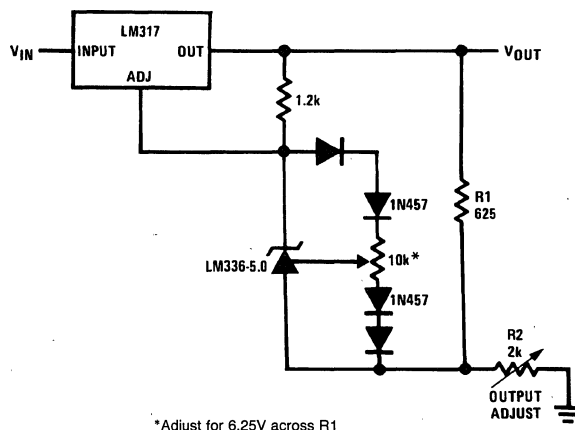


TL/H/5716-10

**FIGURE 2. Temperature Coefficient Adjustment (Trim Range =  $\pm 0.5V$  Typical)**

## Typical Applications (Continued)

### Precision Power Regulator with Low Temperature Coefficient

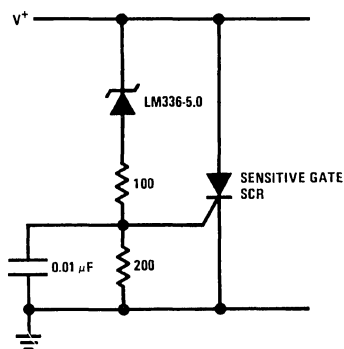


\*Adjust for 6.25V across R1

TL/H/5716-11

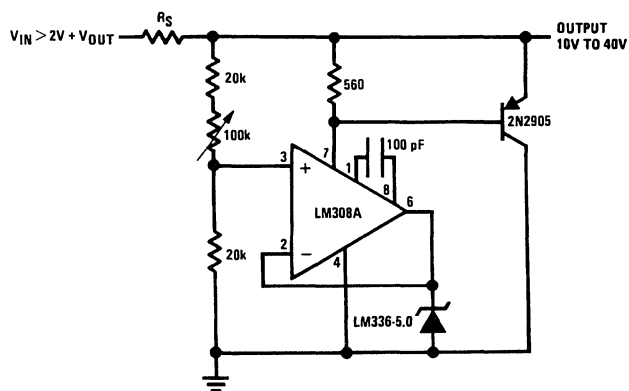
# Typical Applications (Continued)

## 5V Crowbar



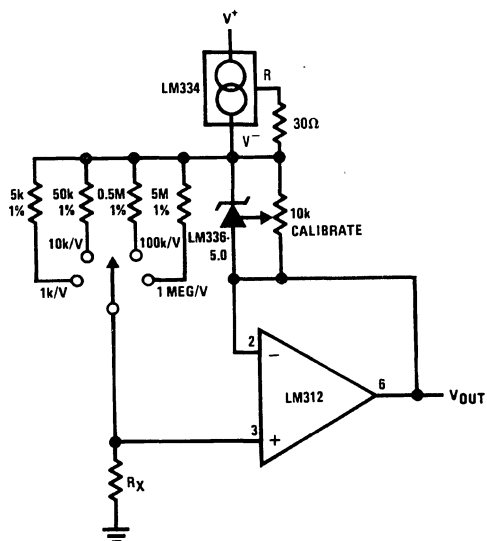
TL/H/5716-12

## Adjustable Shunt Regulator



TL/H/5716-13

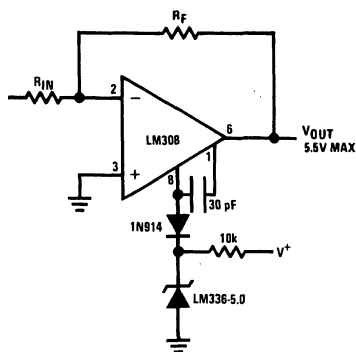
## Linear Ohmmeter



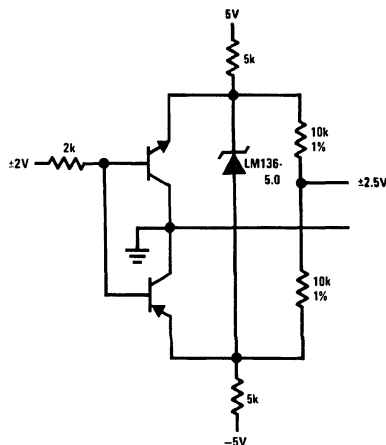
TL/H/5716-14

## Typical Applications (Continued)

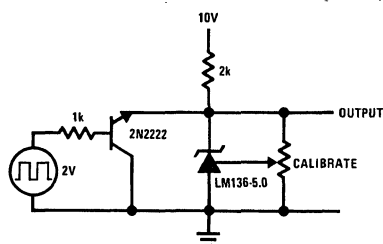
### Op Amp with Output Clamped



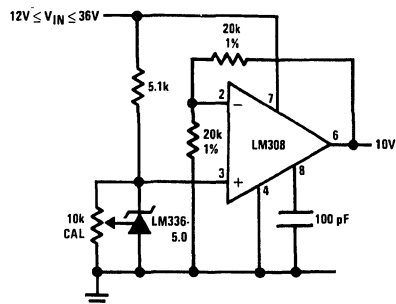
### Bipolar Output Reference



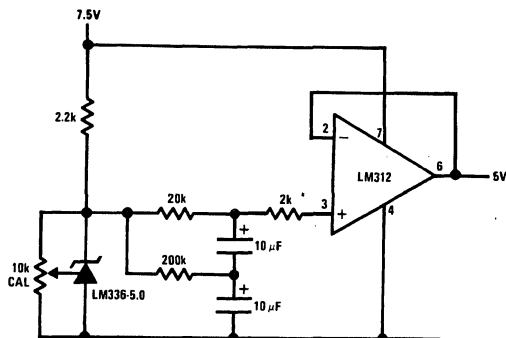
### 5.0V Square Wave Calibrator



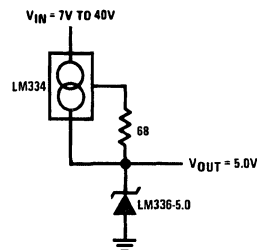
### 10V Buffered Reference



### Low Noise Buffered Reference

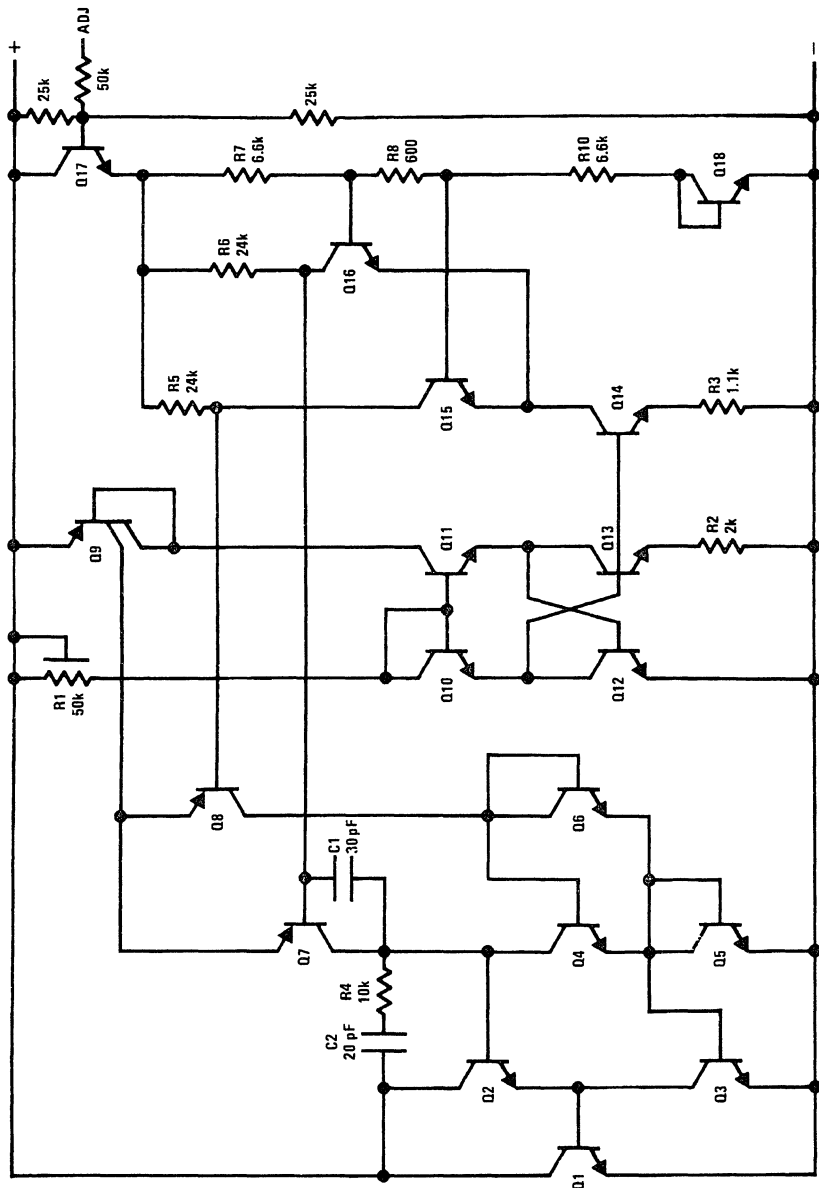


### Wide Input Range Reference



TL/H/5716-6

# Schematic Diagram



TL/H/5716-16

LM136-5.0/LM236-5.0/LM336-5.0