



4K x 4 CMOS STATIC RAM

- 20, 25, AND 35ns ADDRESS ACCESS TIME
- EQUAL ACCESS AND CYCLE TIMES
- 20-PIN, 300 MIL PLASTIC
- ALL INPUTS AND OUTPUTS TTL COMPATIBLE, LOW CAPACITANCE, AND PROTECTED AGAINST STATIC DISCHARGE
- 50 μ A CMOS STANDBY CURRENT (MK41H68)
- TTL STANDBY CURRENT UNAFFECTED BY ADDRESS ACTIVITY (MK41H68)
- HIGH SPEED CHIP SELECT (MK41H69)
- JEDEC STANDARD PINOUT

TRUTH TABLE (MK41H68)

CE	WE	Mode	DQ	Power
H	X	Deselect	High Z	Standby
L	L	Write	D _{IN}	Active
L	H	Read	D _{OUT}	Active

TRUTH TABLE (MK41H69)

CS	WE	Mode	DQ	Power
H	X	Deselect	High Z	Active
L	L	Write	D _{IN}	Active
L	H	Read	D _{OUT}	Active

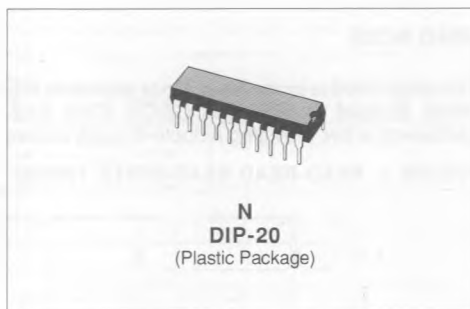
X : Don't care.

DESCRIPTION

The MK41H68 and MK41H69 feature fully static operation requiring no external clocks or timing strobes, and equal address access and cycle times. Both require only a single + 5V \pm 10 percent power supply. Both devices are fully TTL compatible.

The MK41H68 has a Chip Enable power down feature which automatically reduces power dissipation when the CE pin is brought inactive (high). Standby power can be further reduced to microwatt levels by raising the CE pin to the full V_{CC} voltage.

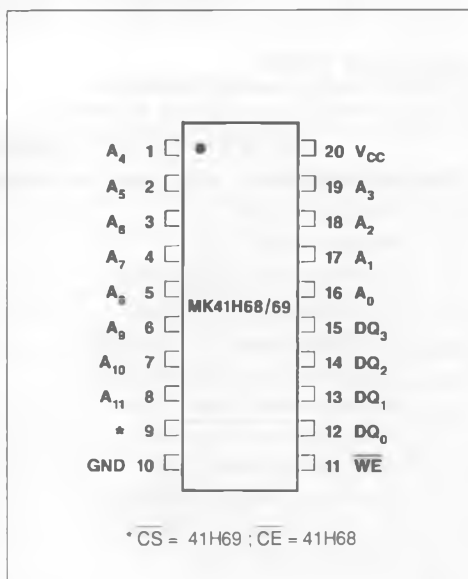
The MK41H69 Chip Select pin provides a high speed chip select access, allowing fast read cycles despite decoder delays.



PIN NAMES

A ₀ - A ₁₁ - Address	WE - Write Enable
DQ ₀ - DQ ₃ - Data I/O	GND - Ground
	V _{CC} - + 5 Volts
CE - Chip Enable (MK41H68)	
CS - Chip Select (MK41H69)	

Figure 1 : Pin Connections.



power can be further reduced to microwatt levels by raising the **CE** pin to the full V_{CC} voltage.

The MK41H69 Chip Select pin provides a high speed chip select access, allowing fast read cycles despite decoder delays.

OPERATIONS

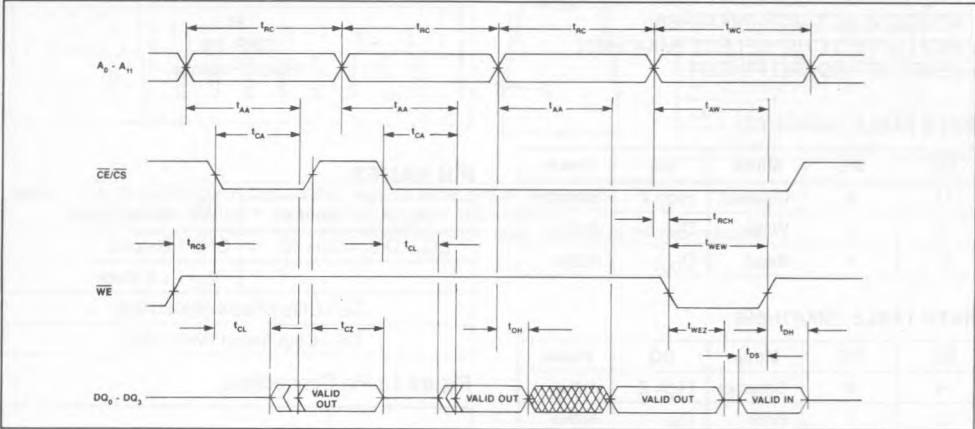
READ MODE

The MK41H68/9 is in the Read Mode whenever **WE** (Write Enable) is high and **CE/CS** (Chip Enable/Select) is low, providing a ripple-through access

to data from four of 16,384 locations in the static storage array. The unique address specified by the 12 Address Inputs defines which one of 4096 nibbles of data is to be accessed.

Valid data will be available at the four Data Output pins within t_{AA} after the last address input signal is stable, providing that the **CE/CS** access time is satisfied. If **CE/CS** access time is not met, data access will be measured from the limiting parameter (t_{CA}) rather than the address. The state of the four Data I/O pins is controlled by the **CE/CS**, and **WE** control signals. The data lines may be in an indeterminate state at t_{CL} , but the data lines will always have valid data at t_{AA} .

FIGURE 2. READ-READ-READ-WRITE TIMING



READ CYCLE TIMING
AC ELECTRICAL CHARACTERISTICS
($0^{\circ}\text{C} \leq T_A \leq 70^{\circ}\text{C}$) ($V_{CC} = 5.0\text{ V} \pm 10\text{ percent}$)

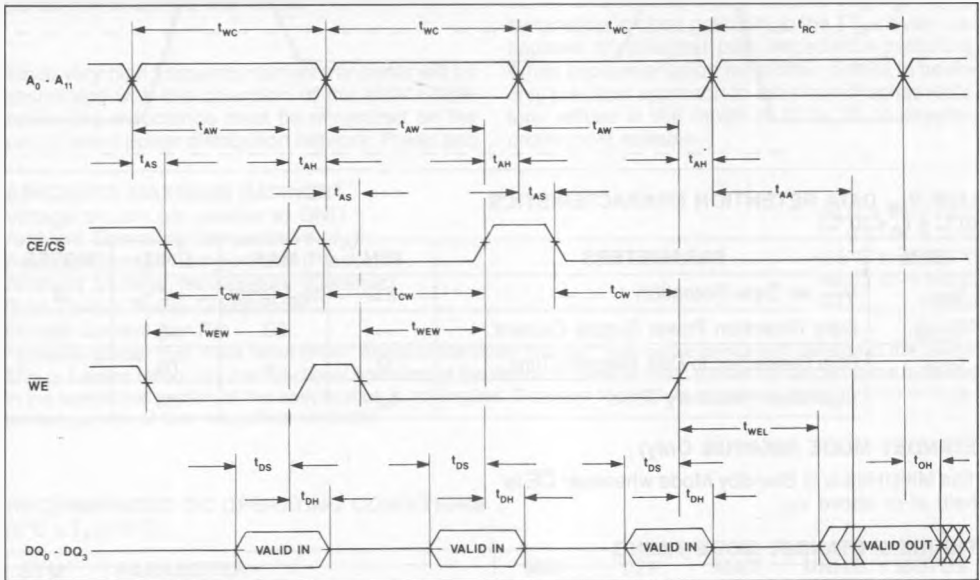
SYM	PARAMETER	MK41H6X-20		MK41H6X-25		MK41H6X-35		UNITS	NOTES
		MIN	MAX	MIN	MAX	MIN	MAX		
t_{RC}	Read Cycle Time	20		25		35		ns	
t_{AA}	Address Access Time		20		25		35	ns	1
t_{CL}	Chip Enable to Low-Z (MK41H68)	7		7		7		ns	2
t_{CL}	Chip Select to Low-Z (MK41H69)	5		5		5		ns	2
t_{CA}	Chip Enable Access Time (MK41H68)		20		25		35	ns	1
t_{CA}	Chip Select Access Time (MK41H69)		10		12		15	ns	1
t_{RCS}	Read Command Setup Time	0		0		0		ns	
t_{RCH}	Read Command Hold Time	0		0		0		ns	
t_{OH}	Valid Data Out Hold Time	5		5		5		ns	1
t_{CZ}	Chip Enable to High-Z (MK41H68)		8		10		13	ns	2
t_{CZ}	Chip Select to High-Z (MK41H69)		7		8		10	ns	2
t_{WEZ}	Write Enable to High-Z		8		10		13	ns	2

WRITE MODE

The MK41H68/9 is in the Write Mode whenever the \overline{WE} and $\overline{CE}/\overline{CS}$ inputs are in the low state. $\overline{CE}/\overline{CS}$ or \overline{WE} must be high during address transitions. Addresses must be held valid throughout a write cycle. The Write begins with the concurrence of a low on \overline{WE} and $\overline{CE}/\overline{CS}$. Therefore, t_{AS} is referenced to the latter occurring edge of $\overline{CE}/\overline{CS}$, or \overline{WE} .

If the output is enabled ($\overline{CE}/\overline{CS}$ is low), then \overline{WE} will return the outputs to high impedance within t_{WEZ} of its falling edge. Care must be taken to avoid bus contention in this type of operation. Data-In must remain valid t_{DH} after the rising edge of $\overline{CE}/\overline{CS}$ or \overline{WE} .

FIGURE 3. WRITE-WRITE-WRITE-READ TIMING



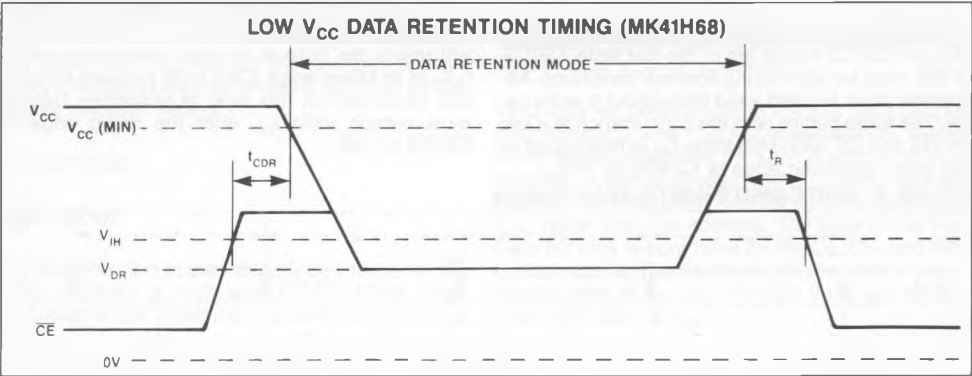
WRITE CYCLE TIMING

AC ELECTRICAL CHARACTERISTICS

($0^\circ\text{C} \leq T_A \leq 70^\circ\text{C}$) ($V_{CC} = 5.0\text{ V} \pm 10\text{ percent}$)

SYM	PARAMETER	MK41H6X-20		MK41H6X-25		MK41H6X-35		UNITS	NOTES
		MIN	MAX	MIN	MAX	MIN	MAX		
t_{WC}	Write Cycle Time	20		25		35		ns	
t_{AS}	Address Setup Time	0		0		0		ns	
t_{AW}	Address Valid to End of Write	16		20		30		ns	
t_{AH}	Address Hold after End of Write	0		0		0		ns	
t_{CW}	Chip Enable/Select to End of Write	18		22		32		ns	
t_{WEW}	Write Enable to End of Write	16		20		30		ns	
t_{DS}	Data Setup Time	12		14		15		ns	
t_{DH}	Data Hold Time	0		0		0		ns	
t_{WEL}	Write Enable to Low-Z	5		5		5		ns	2

FIGURE 4. DATA RETENTION TIMING



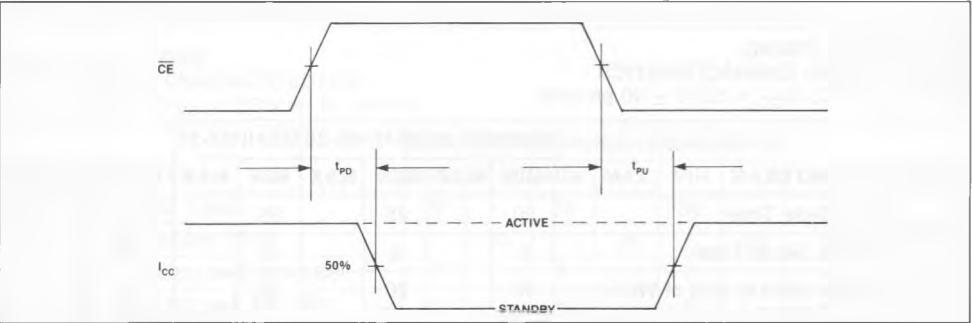
LOW V_{CC} DATA RETENTION CHARACTERISTICS
($0^{\circ}\text{C} \leq T_A \leq 70^{\circ}\text{C}$)

SYM	PARAMETERS	MIN	MAX	UNIT	NOTES
V_{DR}	V_{CC} for Data Retention	2.0	$V_{CC} \text{ (min)}$	V	6
I_{CCDR}	Data Retention Power Supply Current	—	50	μA	6
t_{CDR}	Chip Deselection to Data Retention Time	0	—	ns	
t_R	Operation Recovery Time	t_{RC}	—	ns	

STANDBY MODE (MK41H68 Only)

The MK41H68 is in Standby Mode whenever \overline{CE} is held at or above V_{IH} .

FIGURE 5. STANDBY MODE TIMING



STANDBY MODE
AC ELECTRICAL CHARACTERISTICS
($0^{\circ}\text{C} \leq T_A \leq 70^{\circ}\text{C}$) ($V_{CC} = 5.0 \text{ V} \pm 10 \text{ percent}$)

SYM	PARAMETER	MK41H68-20		MK41H68-25		MK41H68-35		UNITS	NOTES
		MIN	MAX	MIN	MAX	MIN	MAX		
t_{PD}	Chip Enable High to Power Down		20		25		35	ns	
t_{PU}	Chip Enable Low to Power Up	0		0		0		ns	

APPLICATION

The MK41H68/9 operates from a 5.0 volt supply. It is compatible with all standard TTL families on all inputs and outputs. The device should share a solid ground plane with any other devices interfaced with it, particularly TTL devices. Additionally, because the outputs can drive rail-to-rail into high impedance loads, the 41H68/9 can also interface to 5 volt CMOS on all inputs and outputs. Refer to the normalized performance curves that follow.

Since very high frequency current transients will be associated with the operation of the MK41H68/9, power line inductance must be minimized on the circuit board power distribution network. Power and

ground trace gridding or separate power planes can be employed to reduce line inductance. Additionally, a high frequency decoupling capacitor should be placed next to each RAM. The capacitor should be 0.1 μ F or larger.

Though often times not thought of as such, the traces on a memory board are basically unterminated, low impedance transmission lines. As such they are subject to signal reflections manifested as noise, undershoots and excessive ringing. Series termination in close proximity to the TTL drivers can improve driver/signal path impedance matching. While experimentation most often proves to be the only practical approach to selection of series resistors, values in the range of 10 to 33 ohms often prove most suitable.

ABSOLUTE MAXIMUM RATINGS*

Voltage on any pin relative to GND	−1.0 V to +7.0 V
Ambient Operating Temperature (T_A)	0°C to +70°C
Ambient Storage Temperature (Plastic)	−55°C to +125°C
Ambient Storage Temperature (Ceramic)	−65°C to +150°C
Total Device Power Dissipation	1 Watt
Output Current per Pin	50 mA

*Stresses greater than those listed under "Absolute Maximum Ratings" may cause permanent damage to the device. This is a stress rating only and functional operation of the device at these or other conditions beyond those indicated in the operational section of this specification is not implied. Exposure to absolute maximum rating conditions for extended periods of time may affect reliability.

RECOMMENDED DC OPERATING CONDITIONS

(0°C $\leq T_A \leq 70^\circ$ C)

SYM	PARAMETER	MIN	TYP	MAX	UNITS	NOTES
V_{CC}	Supply Voltage	4.5	5.0	5.5	V	3
GND	Supply Voltage	0	0	0	V	
V_{IH}	Logic 1 Voltage, All Inputs	2.2		$V_{CC} + 1.0$	V	3
V_{IL}	Logic 0 Voltage, All Inputs	−0.3		0.8	V	3

DC ELECTRICAL CHARACTERISTICS

(0°C $\leq T_A \leq 70^\circ$ C) ($V_{CC} = 5.0$ V \pm 10 percent)

SYM	PARAMETER	MIN	MAX	UNITS	NOTES
I_{CC1}	Average Power Supply Current		120	mA	4
I_{CC2}	TTL Standby Current (MK41H68 only)		8	mA	5
I_{CC3}	CMOS Standby Current (MK41H68 only)		50	μ A	6
I_{IL}	Input Leakage Current (Any Input Pin)	−1	+1	μ A	7
I_{OL}	Output Leakage Current (Any Output Pin)	−10	+10	μ A	8
V_{OH}	Output Logic 1 Voltage ($I_{OUT} = -4$ mA)	2.4		V	3
V_{OL}	Output Logic 0 Voltage ($I_{OUT} = +8$ mA)		0.4	V	3

CAPACITANCE
(T_A = 25°C, f = 1.0 MHz)

SYM	PARAMETER	TYP	MAX	UNITS	NOTES
C ₁	Capacitance on input pins	4	5	pF	9
C ₂	Capacitance on DQ pins	8	10	pF	5,9

NOTES

1. Measured with load shown in Figure 6(A).

2. Measured with load shown in Figure 6(B).

3. All voltages referenced to GND.

4. I_{CC1} is measured as the average AC current with V_{CC} = V_{CC} (max) and with the outputs open circuit. tcycle = min. duty cycle 100%.

5. CE = V_{IH}, All Other Inputs = Don't Care.
6. V_{CC} (max) ≥ CE ≥ V_{CC} - 0.3 V, All Other Inputs = Don't Care.

7. Input leakage current specifications are valid for all V_{IN} such that 0 V < V_{IN} < V_{CC}. Measured at V_{CC} = V_{CC} (max).

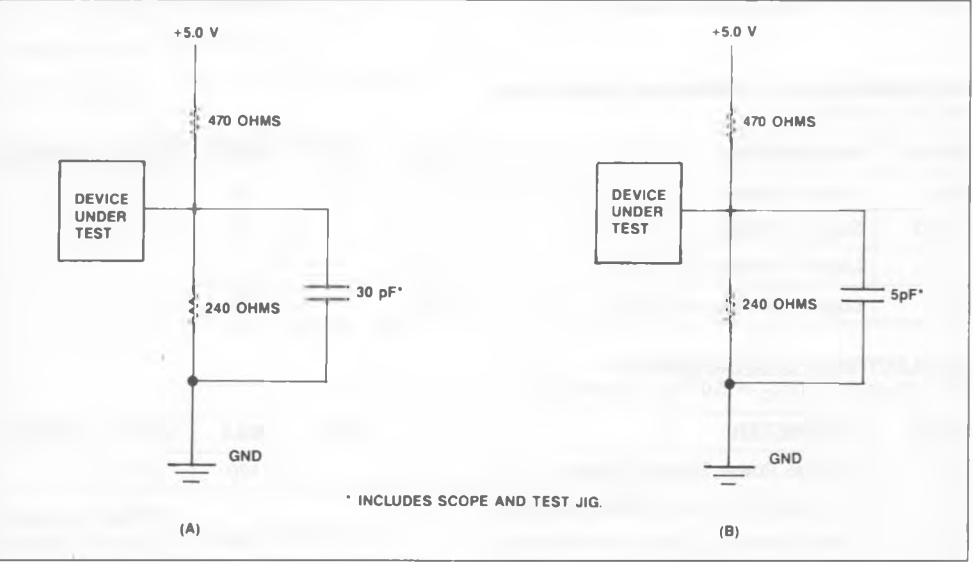
8. Output leakage current specifications are valid for all V_{OUT} such that 0 V < V_{OUT} < V_{CC}. CE/CS = V_{IH} and V_{CC} in valid operating range.

9. Capacitances are sampled and not 100% tested.

AC TEST CONDITIONS

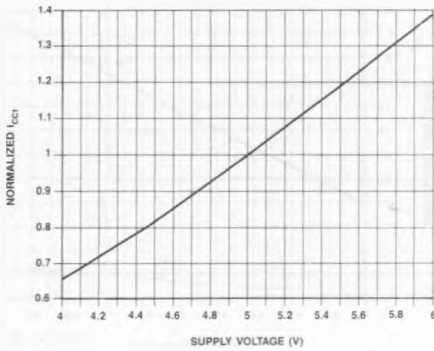
Input Levels	GND to 3.0 V
Transition Times	5 ns
Input and Output Signal Timing Reference Level	1.5 V
Ambient Temperature	0°C to 70°C
V _{CC}	5.0 V ± 10 percent

FIGURE 6. OUTPUT LOAD CIRCUITS

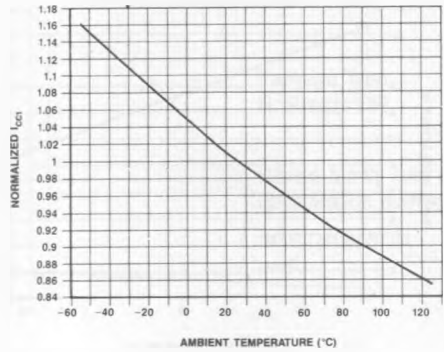


NORMALIZED DC AND AC PERFORMANCE CHARACTERISTICS

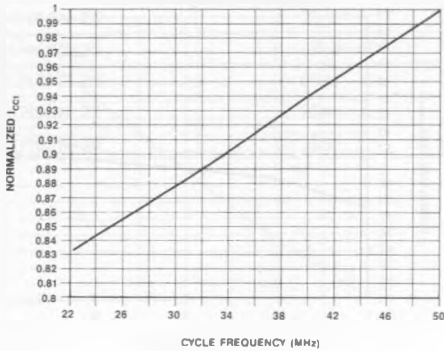
NORMALIZED SUPPLY CURRENT VS.
SUPPLY VOLTAGE $T_A = 0^\circ\text{C}$



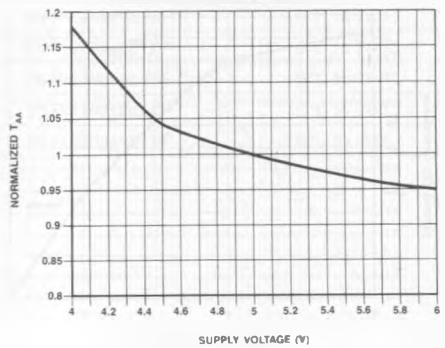
NORMALIZED SUPPLY CURRENT VS.
AMBIENT TEMPERATURE $V_{CC} = 5.0\text{V}$



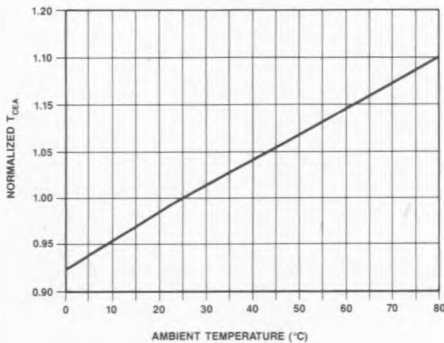
NORMALIZED SUPPLY CURRENT VS.
CYCLE TIME $V_{CC} = 5.0\text{V}$ $T_A = 25^\circ\text{C}$



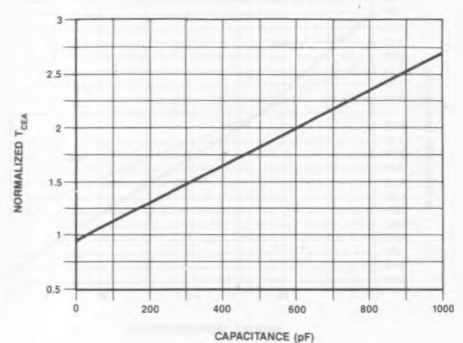
NORMALIZED ACCESS TIME VS.
SUPPLY VOLTAGE $T_A = 25^\circ\text{C}$



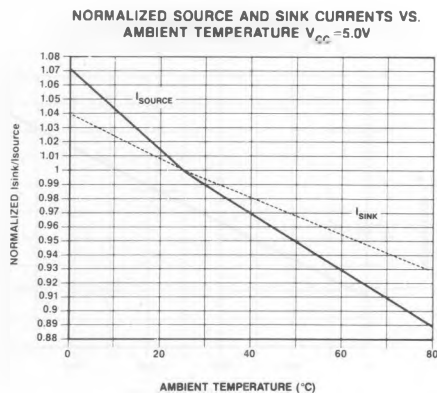
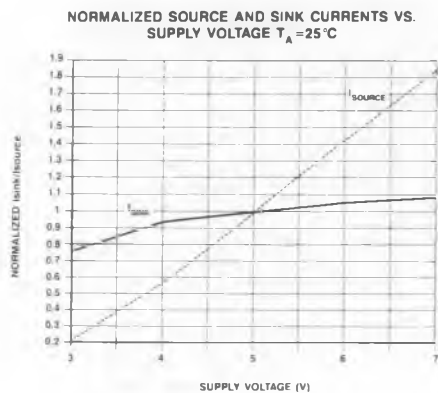
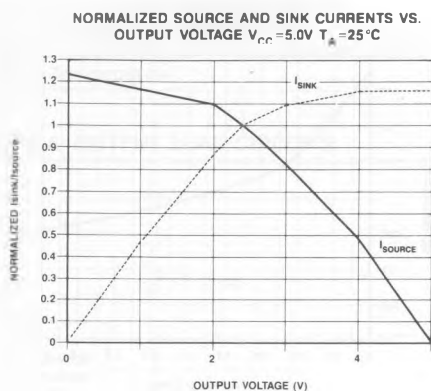
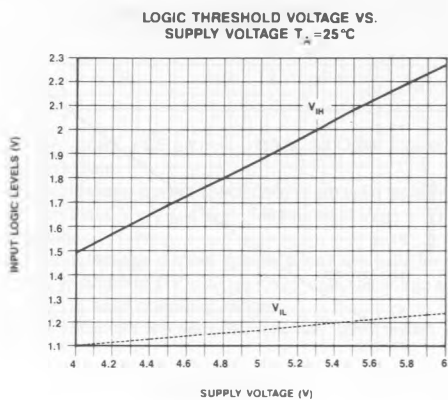
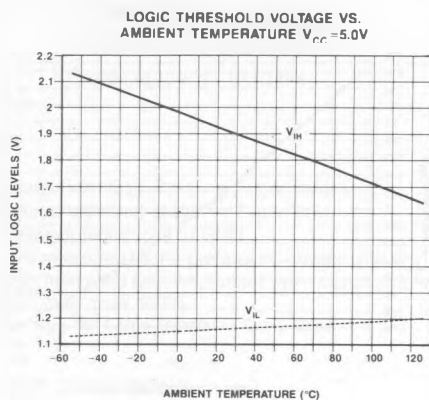
NORMALIZED ACCESS TIME VS.
AMBIENT TEMPERATURE $V_{CC} = 5.0\text{V}$

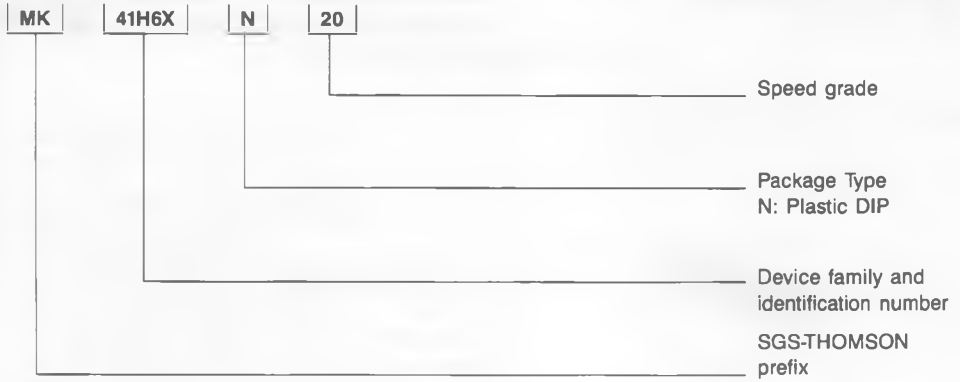


NORMALIZED ACCESS TIME VS.
OUTPUT LOADING $V_{CC} = 5.0\text{V}$ $T_A = 25^\circ\text{C}$



NORMALIZED DC AND AC PERFORMANCE CHARACTERISTICS



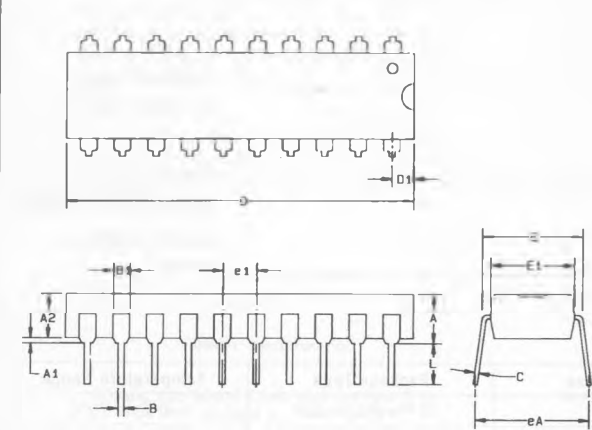


ORDER CODES

Part Number	Access Time	Package Type	Temperature Range
MK41H68N-20	20ns	20 Pin Plastic DIP	0°C to 70°C
MK41H68N-25	25ns	20 Pin Plastic DIP	0°C to 70°C
MK41H68N-35	35ns	20 Pin Plastic DIP	0°C to 70°C
MK41H69N-20	20ns	20 Pin Plastic DIP	0°C to 70°C
MK41H69N-25	25ns	20 Pin Plastic DIP	0°C to 70°C
MK41H69N-35	35ns	20 Pin Plastic DIP	0°C to 70°C

PACKAGE DESCRIPTION

20 PIN "N" PACKAGE. PLASTIC DIP



Dim.	mm		Inches		Notes
	Min.	Max.	Min.	Max.	
A		5.334		.210	2
A1	0.381		.015		2
A2	3.048	3.556	.120	.140	
B	0.381	0.533	.015	.021	3
B1	1.27	1.778	.050	.070	
C	0.203	0.304	.008	.012	3
D	25.908	26.67	1.020	1.050	1
D1	1.524	1.905	.060	.075	
E	7.62	8.255	.300	.325	
E1	6.096	6.858	.240	.270	
e1	2.286	2.794	.090	.110	
eA	7.62	10.16	.300	.400	
L	3.048		.120		

- Notes :
- 1. Overall length includes .010 in. Flash on either end of the package.
 - 2. Package standoff to be measured per jedec requirements.
 - 3. The maximum limit shall be increased by .003 in. When solder lead finish is specified.