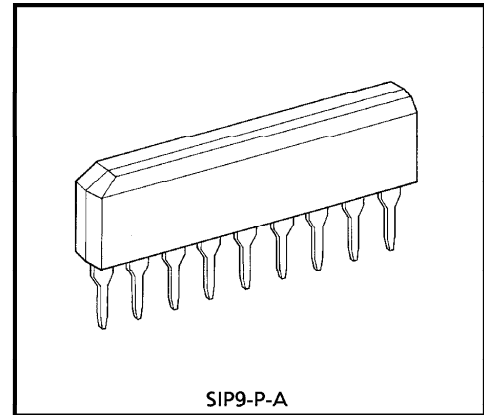


AUDIO POWER AMPLIFIER

The TA7376P is dual audio power amplifier for portable products.

FEATURES

- Low operating supply voltage : $V_{CC} = 1.8 \sim 6V$ ($T_a = 25^\circ C$)
- Low quiescent current : $I_{CCQ} = 5.3mA$ ($V_{CC} = 4.5V$)
- Including ripple filter circuit : $RR = -42dB$ ($C_{RIP} = 10\mu F, f_r = 100Hz$)
- Voltage gain : $G_V = 39.5dB$ (Typ.)
- Very few external parts and small package. (SIP-9PIN)

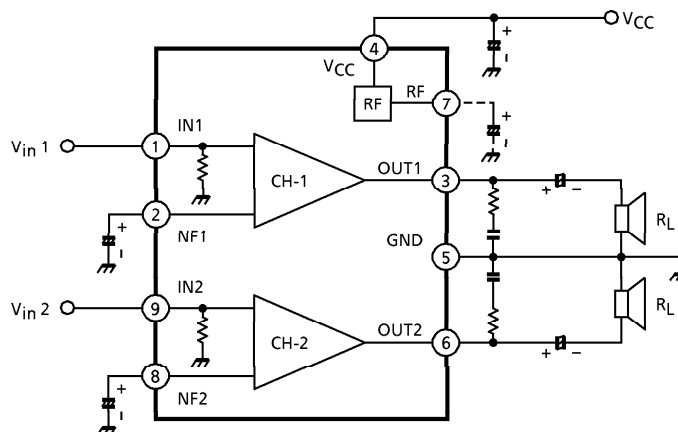


Weight : 0.92g (Typ.)

OUTPUT POWER TABLE (THD = 10%, f = 1kHz, Stereo, Typ. value)

LOAD V_{CC}	$R_L = 32\Omega$	$R_L = 16\Omega$	$R_L = 8\Omega$	$R_L = 4\Omega$
3V	21mW	38mW	65mW	100mW
4.5V	56mW	100mW	180mW	300mW
6V	120mW	230mW	400mW	—

BLOCK DIAGRAM



© The information contained herein is presented only as a guide for the applications of our products. No responsibility is assumed by TOSHIBA CORPORATION for any infringements of intellectual property or other rights of the third parties which may result from its use. No license is granted by implication of otherwise under any intellectual property or other rights of TOSHIBA CORPORATION or others.

© These TOSHIBA products are intended for use in general commercial applications (office equipment, communication equipment, measuring equipment, domestic appliances, etc.). please make sure that you consult with us before you use these TOSHIBA products in equipment which requires extraordinarily high quality and/or reliability, and in equipment which may involve life threatening or critical application, including but not limited to such uses as atomic energy control, airplane or spaceship instrumentation, traffic signals, medical instrumentation, combustion control, all types of safety devices, etc. TOSHIBA cannot accept and hereby disclaims liability for any damage which may occur in case the TOSHIBA products are used in such equipment or applications without prior consultation with TOSHIBA.

APPLICATION NOTE

1. Input stage

The input stage of power amplifier (Equivalent Circuit) is comprised of a PNP differential pair (Q₂ and Q₃) preceded by a PNP emitter follower (Q₁) which allows DC referencing of the source signal to ground.

This eliminates the need for an input coupling condenser. However, in case the brush noise of volume becomes a problem, provide serially a coupling condenser to the input side.

2. Adjustment of voltage gain

The voltage gain is fixed at $G_V \cong 40\text{dB}$ by the resistors (R₁ and R₂) in IC, however, its reduction is possible through adding R_f as shown in Fig.2.

In this case, the voltage gain is obtained by the following equation.

$$G_V \cong 20 \log \frac{R_1 + R_2 + R_f}{R_1 + R_f}$$

It is recommended to use this IC with the voltage gain of $G_V \cong 30\text{dB}$ or over.

3. Ripple rejection ratio (RR)

If the TA7376P does not have the ripple filter condenser (C_{RIIP}), the ripple rejection ratio is as follow.

$$RR = -25\text{dB (Typ.)}$$

$$(C_{NF} = 22\mu\text{F}, f_r = 100\text{Hz})$$

$$RR = -34\text{dB (Typ.)}$$

$$(C_{NF} = 100\mu\text{F}, f_r = 100\text{Hz})$$

If the ripple filter condenser is connected to the pin⑦, the ripple rejection ratio is improved as following the DATA (RR - f_r).

4. Pop sound

It must be connected the condenser (C_{RIIP}) from pin⑦ to GND, if the "Pop" sound is harshness.

In this case, the value is 10μF something.

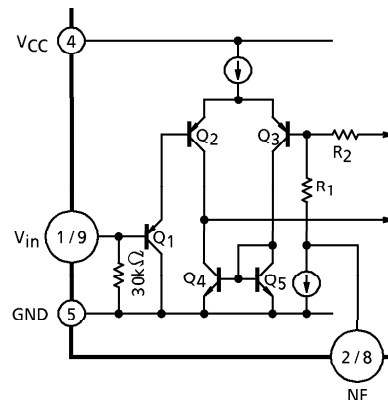


Fig.1

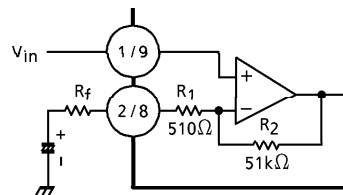


Fig.2

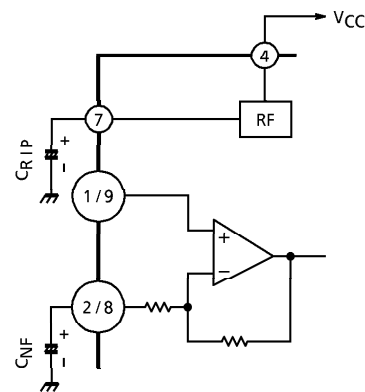


Fig.3

5. Phase-compensation

The purpose of condenser C_1 is to prevent oscillation.

These condenser need to be small temperature coefficient and excellent frequency characteristic. So ceramic condenser is unsuitable.

Condenser C_2 is rather large value than $10\mu\text{F}$ and GND line is better to short and wide lay-out so that the some common impedance are decreased.

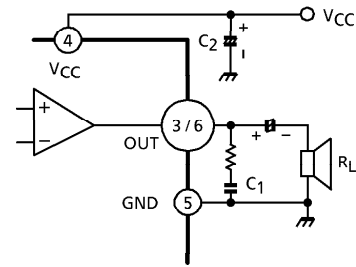


Fig.4

MAXIMUM RATINGS ($T_a = 25^\circ\text{C}$)

CHARACTERISTIC	SYMBOL	RATING	UNIT
Supply Voltage	V_{CC}	8	V
Power Dissipation	P_D (Note)	950	mW
Operation Temperature	T_{opr}	-25~75	$^\circ\text{C}$
Storage Temperature	T_{stg}	-55~150	$^\circ\text{C}$

(Note) Derated above $T_a = 25^\circ\text{C}$ in the proportion of $7.6\text{mW}/^\circ\text{C}$.

ELECTRICAL CHARACTERISTICS

(Unless otherwise specified, $V_{CC} = 4.5\text{V}$, $f = 1\text{kHz}$, $R_g = 600\Omega$, $R_L = 4\Omega$, $T_a = 25^\circ\text{C}$)

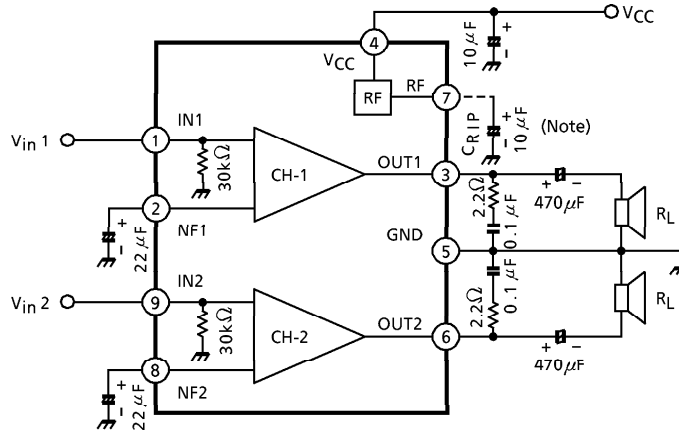
CHARACTERISTIC	SYMBOL	TEST CIRCUIT	TEST CONDITION	MIN.	TYP.	MAX.	UNIT
Quiescent Current	I_{CCQ}	—	$V_{in} = 0, V_{CC} = 3\text{V}$	—	4.9	8.0	mA
			$V_{in} = 0$	—	5.3	10.0	
			$V_{in} = 0, V_{CC} = 6\text{V}$	—	5.7	14.0	
Output Power	P_{out}	—	$V_{CC} = 3\text{V}, R_L = 4\Omega, \text{THD} = 10\%$	84	100	—	mW
			$V_{CC} = 3\text{V}, R_L = 32\Omega, \text{THD} = 10\%$	—	21	—	
			$V_{CC} = 4.5\text{V}, R_L = 4\Omega, \text{THD} = 10\%$	250	300	—	
			$V_{CC} = 4.5\text{V}, R_L = 8\Omega, \text{THD} = 10\%$	—	180	—	
			$V_{CC} = 6\text{V}, R_L = 8\Omega, \text{THD} = 10\%$	—	400	—	
Total Harmonic Distortion	THD	—	$P_{out} = 100\text{mW}$	—	0.11	1.0	%
Voltage Gain	G_V	—	$V_{out} = 0.775V_{rms}$	37.5	39.5	41.5	dB
Output Noise Voltage	V_{no}	—	$R_g = 10\text{k}\Omega, \text{BPF} = 20\text{Hz} \sim 20\text{kHz}$	—	0.21	0.7	mV_{rms}
Ripple Rejection Ratio	RR	—	$C_{RIP} = 10\mu\text{F}, C_{NF} = 22\mu\text{F}$ $f_r = 100\text{Hz}, V_r = 0.38V_{rms}$	—	-42	-30	dB
			$C_{RIP} = \text{OPEN}, C_{NF} = 100\mu\text{F}$ $f_r = 100\text{Hz}, V_r = 0.38V_{rms}$	—	-34	—	
Cross Talk	CT	—	$V_{out} = 0.775V_{rms}$	—	-60	-40	dB
Input Resistance	R_{IN}	—	—	—	30	—	$\text{k}\Omega$

QUIESCENT TERMINAL DC VOLTAGE ($V_{CC} = 4.5\text{V}$, $T_a = 25^\circ\text{C}$, Typ. value)

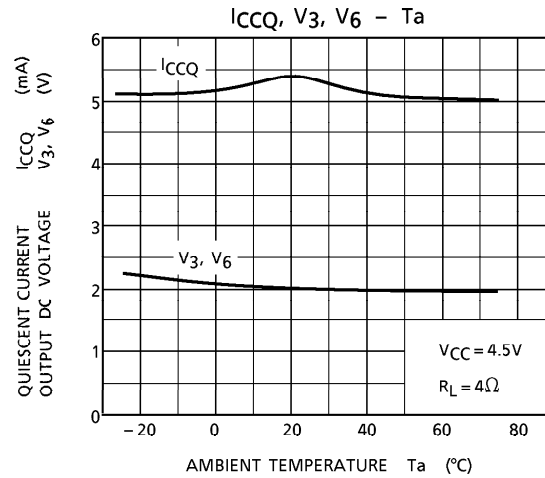
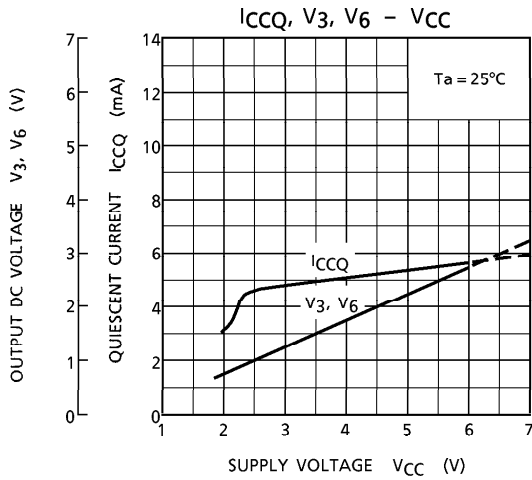
{ UNIT : V }

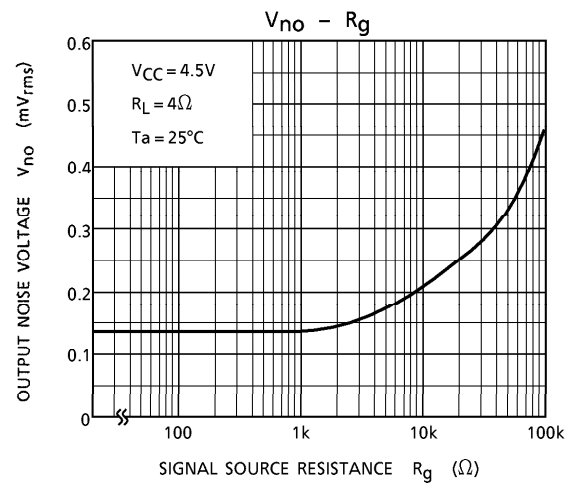
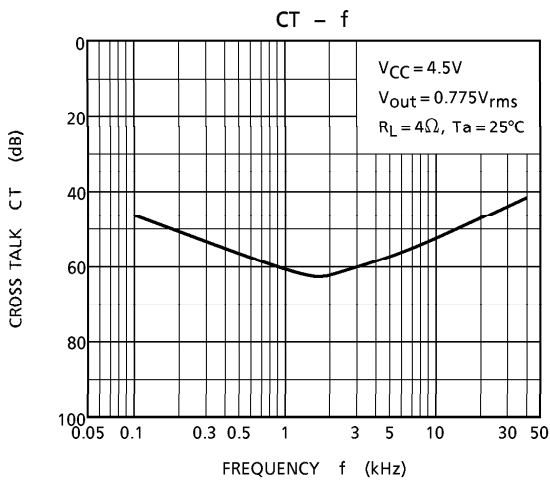
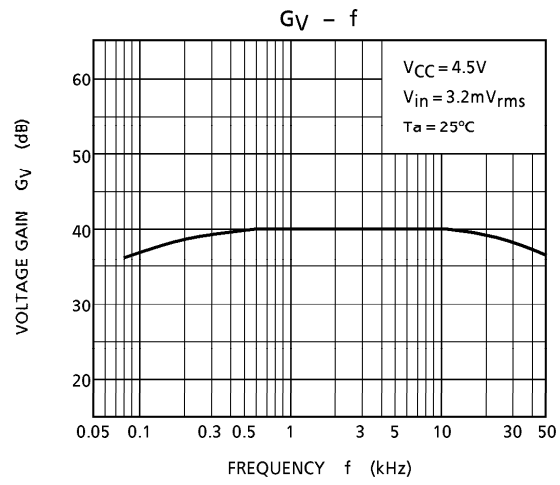
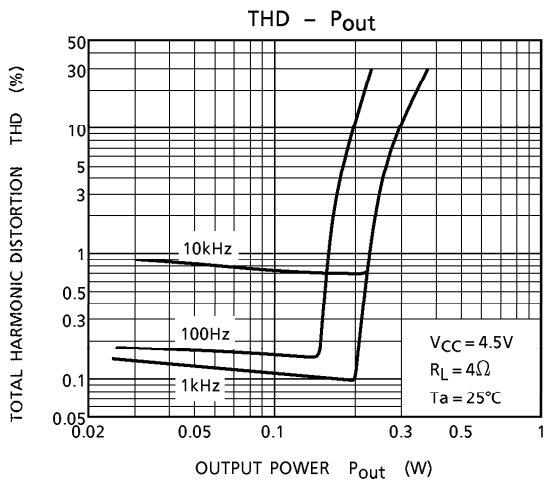
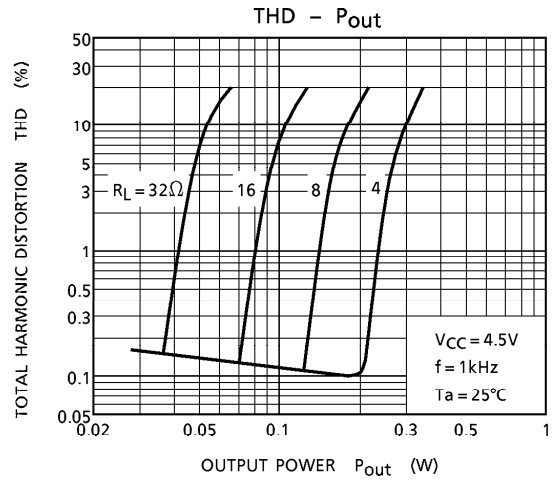
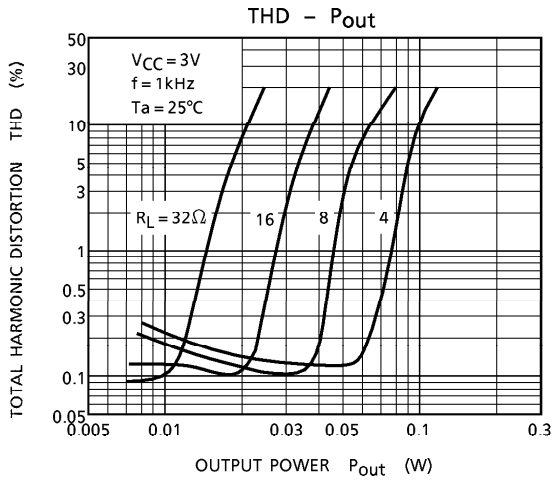
TERMINAL	1	2	3	4	5	6	7	8	9
VOLTAGE (V)	0.003	0.59	1.98	4.5	0	1.98	1.28	0.59	0.003

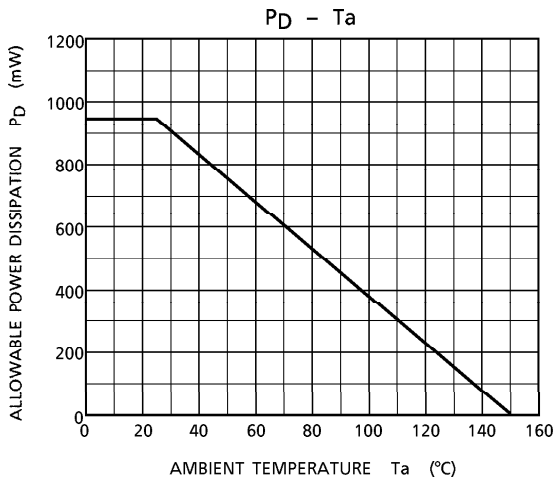
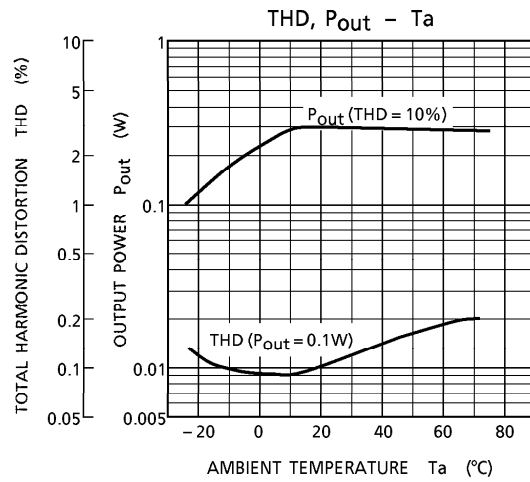
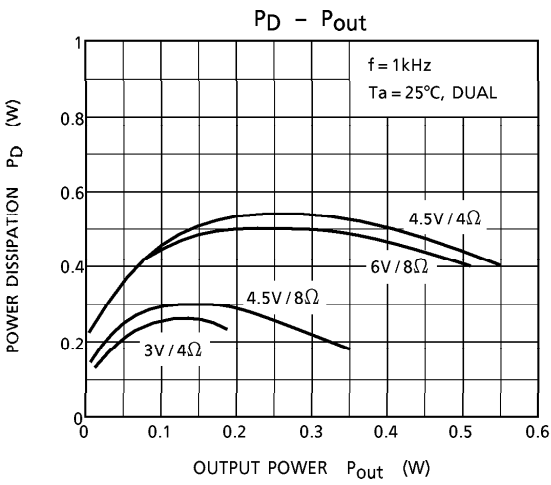
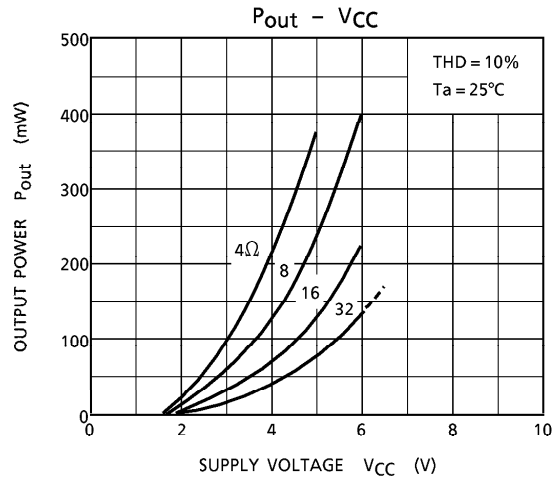
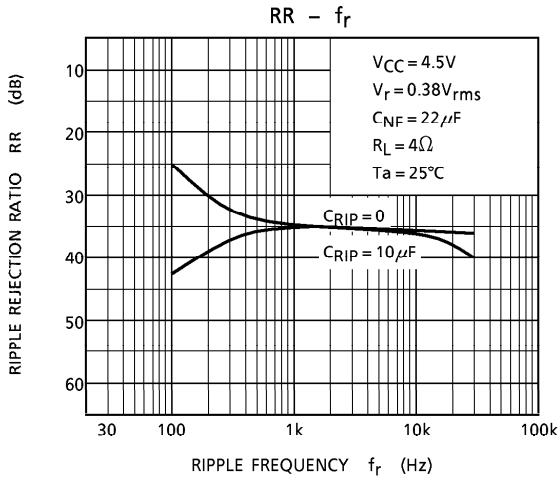
TEST CIRCUIT



(Note) C_{RIP} is shown in item 3 and 4 of APPLICATION NOTE.

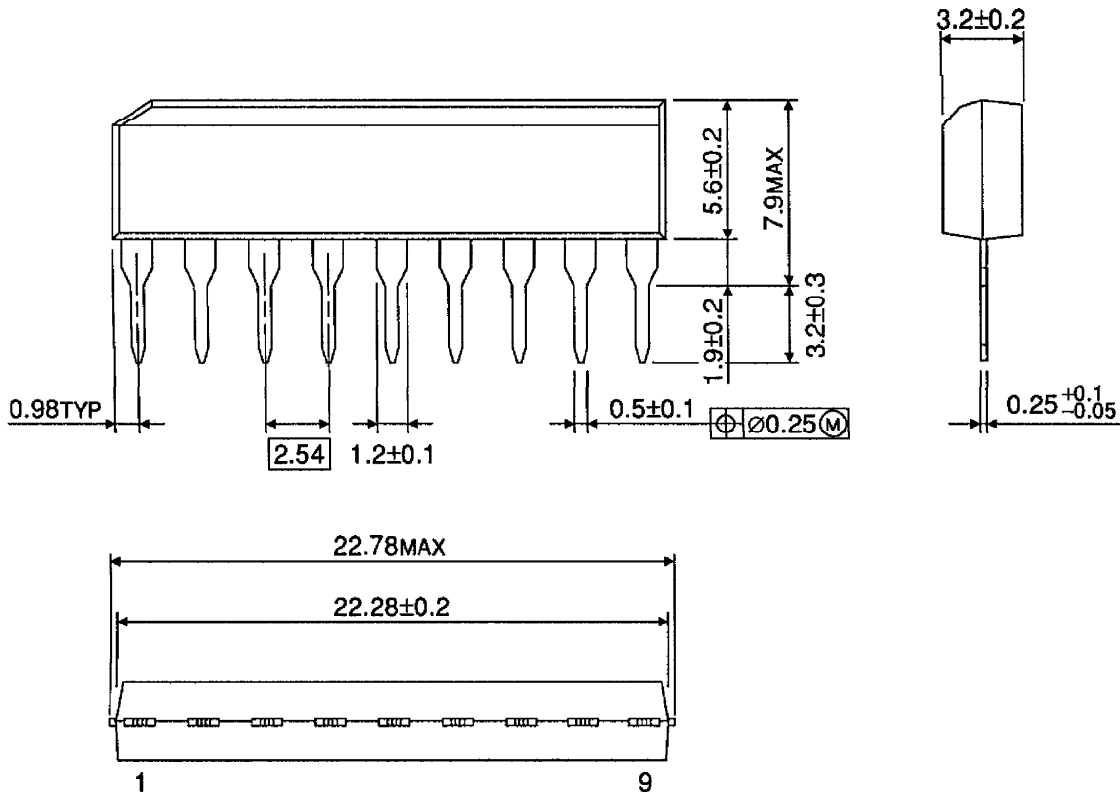






OUTLINE DRAWING
SIP9-P-A

Unit : mm



Weight : 0.92g (Typ.)