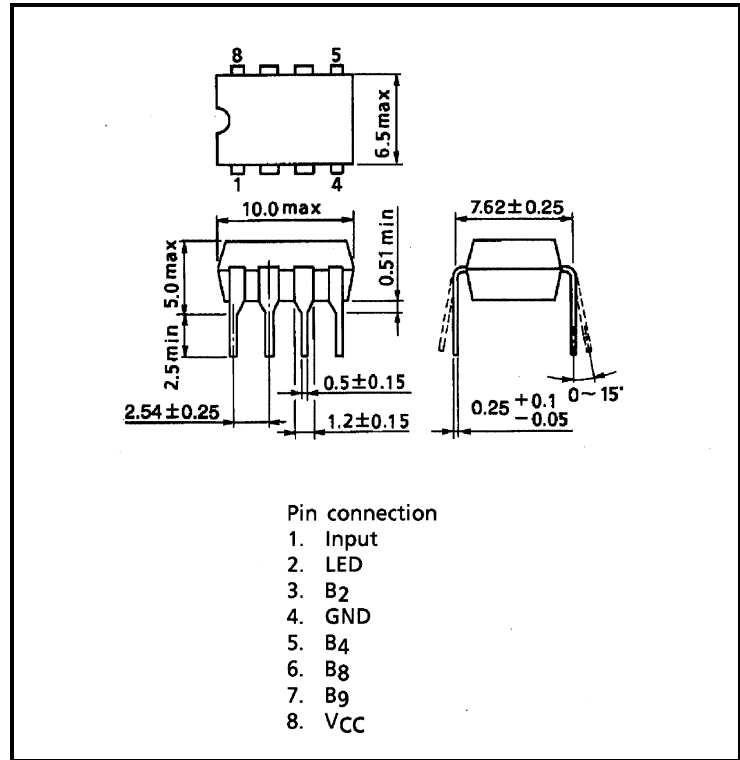


TA8513P

LED DRIVE CIRCUIT FOR OPTICAL TRANSMISSION

Unit : mm

- TTL interface
- Data rate : Up to 20 Mb / s (NRZ code)



1. Maximum Ratings (Ta = 25°C)

PARAMETER	SYMBOL	RATINGS	UNIT
Storage Temperature	T _{stg}	-55~150	°C
Operating Temperature	T _{opr}	-40~85	°C
Power Supply	V _{CC}	-0.5~7	V
Input Voltage	V _{IN}	-0.5~V _{CC}	V
LED Terminal Voltage	V _{LED}	V _{CC} - 2.5~V _{CC}	V
Package Allowable Loss		0.9	W
Soldering Temperature	T _{sol}	260 (Note 1)	°C

Note 1: Soldering time ≤ 10 s (More than 1mm apart from the package).

2. Recommended Operating Conditions

PARAMETER	SYMBOL	MIN	TYP.	MAX	UNIT
Power Supply	V _{CC}	4.75	5.00	5.25	V
Data Rate		DC	—	20	Mb / s

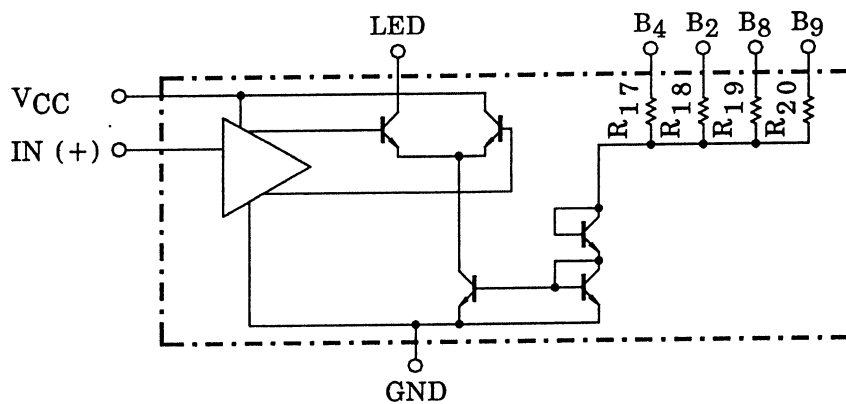
3. Electrical Characteristics (Ta = 25°C, VCC = 5 V, VLED = VCC - 2.5V)

PARAMETER	SYMBOL	CONDITIONS	MIN	TYP.	MAX	UNIT
Current Consumption	I _{CC}	B ₂ , B ₄ , B ₈ , B ₉ = OPEN	—	1.2	—	mA
		V _{B9} = 5.25 V	6	10	14	
		V _{B8} = 5.25 V	15	26	37	
		V _{B2} = 5.25 V	29	42	55	
		V _{B4} = 5.25 V	45	64	83	
Current Limiting Resistor	R ₁₇		—	1.8	—	KΩ
	R ₁₈		—	3	—	
	R ₁₉		—	4.9	—	
	R ₂₀		—	14.8	—	
LED Output Current	I _{LED}	V _{B9} = 5.0 V	5	7	9	mA
		V _{B8} = 5.0 V	15	20	25	
		V _{B2} = 5.0 V	24	32	40	
		V _{B4} = 5.0 V	37	50	63	
LED Cut-off Current	I _{off}		—	—	12	μA

4. Input Logic Part (Ta = 25°C, VCC = 5 V, VLED = VCC - 2.5 V)

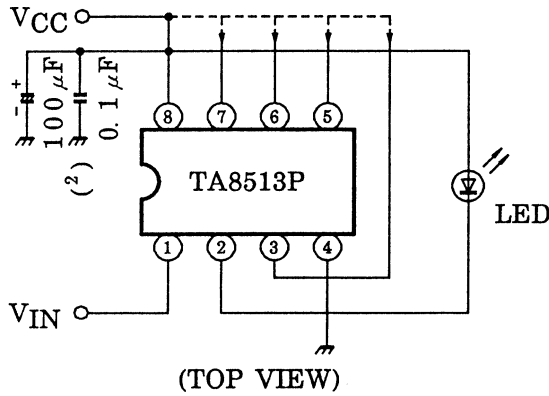
PARAMETER	SYMBOL	CONDITIONS	MIN	TYP.	MAX	UNIT	
TTL Input Unit	Low Level Input Current	I _{IL}	V _{IL} = 0.4 V	—	—	-0.4	mA
	High Level Input Current	I _{IH}	V _{IH} = 2.4 V	—	—	40	
			V _{IH} = 2.7 V	—	—	20	
	Maximum High Level Input Current	I _{IHMAX}	V _{IH} = V _{CC} = 5 V	—	—	10	μA
	Low Level Input Voltage	V _{IL}		—	—	0.8	V
	High Level Input Voltage	V _{IH}		2.0	—	—	V
Input Clamp Voltage	V _{IK}	V _{CC} = 4.75 V, I _{IL} = -10 mA	—	—	-1.5	V	

5. Equivalent Circuit



6. Application Circuit

Example of a recommended circuit ($V_{LED} \leq 2.5\text{ V}$)



See item next figure for connection method of pins No.3, 5, 6 and 7.

Pin No.	LED OUTPUT CURRENT ($V_{CC} = 5\text{ V}$, Turn ON, Typ.)
3	32 mA
5	50 mA
6	20 mA
7	7 mA

Note 2 : Install 0.1 μF capacitor within 5 mm from No.8 pin and 100 μF capacitor within 15 mm from No.8 pin.

7. IC Logic

INPUT LEVEL	OPTICAL OUTPUT (LED OUTPUT CURRENT)
Hi	ON
Lo	OFF

8. Precautions for Operation

- (1) The maximum ratings show the limits, which must not be exceeded even momentarily regardless of the external condition.
Operation beyond the limit of the maximum rating may cause failure of the devices.
Therefore, special attention should be given to the maximum ratings.
- (2) Do not use acid or alkaline soldering flux cleaner solvent.
- (3) Ground all GND pins.

RESTRICTIONS ON PRODUCT USE

000707EAA

- TOSHIBA is continually working to improve the quality and reliability of its products. Nevertheless, semiconductor devices in general can malfunction or fail due to their inherent electrical sensitivity and vulnerability to physical stress. It is the responsibility of the buyer, when utilizing TOSHIBA products, to comply with the standards of safety in making a safe design for the entire system, and to avoid situations in which a malfunction or failure of such TOSHIBA products could cause loss of human life, bodily injury or damage to property.
In developing your designs, please ensure that TOSHIBA products are used within specified operating ranges as set forth in the most recent TOSHIBA products specifications. Also, please keep in mind the precautions and conditions set forth in the "Handling Guide for Semiconductor Devices," or "TOSHIBA Semiconductor Reliability Handbook" etc..
- The TOSHIBA products listed in this document are intended for usage in general electronics applications (computer, personal equipment, office equipment, measuring equipment, industrial robotics, domestic appliances, etc.). These TOSHIBA products are neither intended nor warranted for usage in equipment that requires extraordinarily high quality and/or reliability or a malfunction or failure of which may cause loss of human life or bodily injury ("Unintended Usage"). Unintended Usage include atomic energy control instruments, airplane or spaceship instruments, transportation instruments, traffic signal instruments, combustion control instruments, medical instruments, all types of safety devices, etc.. Unintended Usage of TOSHIBA products listed in this document shall be made at the customer's own risk.
- The information contained herein is presented only as a guide for the applications of our products. No responsibility is assumed by TOSHIBA CORPORATION for any infringements of intellectual property or other rights of the third parties which may result from its use. No license is granted by implication or otherwise under any intellectual property or other rights of TOSHIBA CORPORATION or others.
- The information contained herein is subject to change without notice.