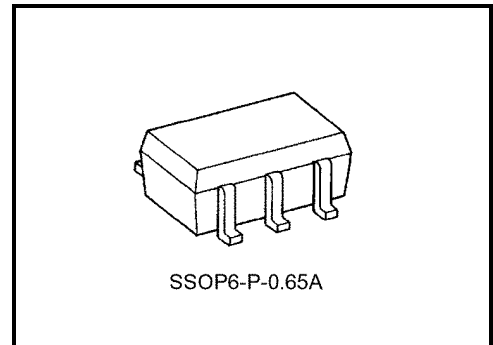


TC7PAU04FU

Dual Inverter (unbuffer) with 3.6 V Tolerant Input

Features

- Low voltage operation: $V_{CC} = 1.8\sim 3.6\text{ V}$
- Quiescent supply current: $I_{CC} < 20\ \mu\text{A}$ (max)
 $V_{CC} = 3.6\text{ V}, T_a = -40\sim 85^\circ\text{C}$
- High-speed operation: $t_{pd} = 3.5\text{ ns}$ (max) ($V_{CC} = 3.0\sim 3.6\text{ V}$)
 $t_{pd} = 4.2\text{ ns}$ (max) ($V_{CC} = 2.3\sim 2.7\text{ V}$)
 $t_{pd} = 8.4\text{ ns}$ (max) ($V_{CC} = 1.8\text{ V}$)
- High-output current: $I_{OH}/I_{OL} = \pm 24\text{ mA}$ (min) ($V_{CC} = 3.0\text{ V}$)
 $I_{OH}/I_{OL} = \pm 18\text{ mA}$ (min) ($V_{CC} = 2.3\text{ V}$)
 $I_{OH}/I_{OL} = \pm 6\text{ mA}$ (min) ($V_{CC} = 1.8\text{ V}$)
- Latch-up performance: $\pm 300\text{ mA}$
- ESD Performance: $\pm 200\text{ V}$ (JEITA)
 $\pm 2000\text{ V}$ (MIL)
- 3.6 V tolerant function for input and power down protection are provided.



Weight: 0.0068 g (typ.)

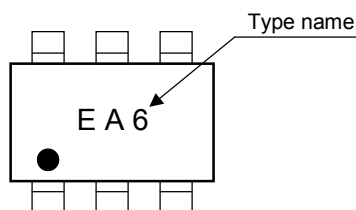
Maximum Ratings ($T_a = 25^\circ\text{C}$)

Characteristics	Symbol	Rating	Unit
Power supply voltage	V_{CC}	-0.5~4.6	V
DC input voltage	V_{IN}	-0.5~4.6	V
DC output voltage	V_{OUT}	-0.5~ $V_{CC} + 0.5$ (Note 1)	V
Input diode current	I_{IK}	-50	mA
Output diode current	I_{OK}	± 50 (Note 2)	mA
DC output current	I_{OUT}	± 50	mA
DC V_{CC} /ground current	I_{CC}	± 100	mA
Power dissipation	P_D	200	mW
Storage temperature	T_{stg}	-65~150	$^\circ\text{C}$

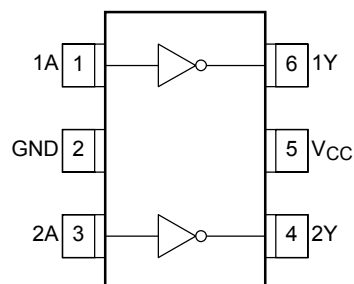
Note 1: Date retention only

Note 2: High or low state. V_{OUT} absolute maximum rating must be observed.

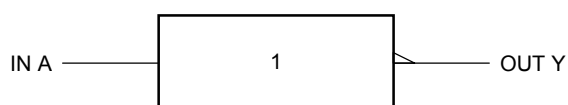
Marking



Pin Assignment (top view)



Logic Diagram



Truth Table

A	Y
L	H
H	L

Recommended Operating Conditions

Characteristics	Symbol	Rating	Unit
Supply voltage	V_{CC}	1.8~3.6	V
		1.2~3.6 (Note 3)	
Input voltage	V_{IN}	-0.3~3.6	V
Output voltage	V_{OUT}	0~ V_{CC} (Note 4)	V
Output Current	I_{OH}/I_{OL}	± 24 (Note 5)	mA
		± 18 (Note 6)	
		± 6 (Note 7)	
Operating temperature	T_{opr}	-40~85	°C
Input rise and fall time	dt/dv	0~10 (Note 8)	ns/V

Note 3: Data Retention Only

Note 4: High or low state

Note 5: $V_{CC} = 3.0\sim 3.6$ V

Note 6: $V_{CC} = 2.3\sim 2.7$ V

Note 7: $V_{CC} = 1.8$ V

Note 8: $V_{CC} = 3.0$ V

Electrical Characteristics

DC Characteristics (Ta = -40~85°C)

Characteristics		Symbol	Test Condition		V _{CC} (V)	Min	Max	Unit	
Input voltage	"H" level	V _{IH}	—	—	1.8	0.85 × V _{CC}	—	V	
				—	2.3~3.6	0.8 × V _{CC}	—		
	"L" level	V _{IL}		—	1.8	—	0.15 × V _{CC}		
				—	2.3~3.6	—	0.2 × V _{CC}		
Output voltage	"H" level	V _{OH}	V _{IN} = V _{IL}	I _{OH} = -100 μA	1.8~3.6	V _{CC} - 0.2	—	V	
				I _{OH} = -6 mA	1.8	1.4	—		
				I _{OH} = -12 mA	2.3	1.8	—		
				I _{OH} = -18 mA	2.3	1.7	—		
				I _{OH} = -12 mA	2.7	2.2	—		
				I _{OH} = -18 mA	3.0	2.4	—		
				I _{OH} = -24 mA	3.0	2.2	—		
	"L" level	V _{OL}		V _{IN} = V _{IH}	I _{OL} = 100 μA	1.8~3.6	—		0.2
					I _{OH} = 6 mA	1.8	—		0.3
					I _{OL} = 12 mA	2.3	—		0.4
					I _{OL} = 18 mA	2.3	—		0.6
					I _{OL} = 12 mA	2.7	—		0.4
					I _{OL} = 18 mA	3.0	—		0.4
					I _{OL} = 24 mA	3.0	—		0.55
Input leakage current		I _{IN}	V _{IN} = 0~3.6 V		2.7~3.6	—	±5.0	μA	
Quiescent supply current		I _{CC}	V _{IN} = V _{CC} or GND		2.7~3.6	—	20.0	μA	
			V _{CC} ≦ (V _{IN} , V _{OUT}) ≦ 3.6 V		2.7~3.6	—	±20.0		

AC Characteristics (Ta = -40~85°C, input tr = tf = 2.0 ns, CL = 30 pF, RL = 500 Ω)

Characteristics	Symbol	Test Condition	VCC (V)	Min	Max	Unit
			1.8	1.0	8.4	ns
2.5 ± 0.2	0.8	4.2				
3.3 ± 0.3	0.6	3.5				

For CL = pF, add approximately 300 ps to the Ac maximum specification.

Dynamic Switching Characteristics (Ta = 25°C, input tr = tf = 2.0 ns, CL = 30 pF)

Characteristics	Symbol	Test Condition	VCC (V)	Typ.	Unit
			1.8	0.25	ns
2.5	0.6				
3.3	0.8				
Quiet output maximum dynamic VOL	VOLP	VIN = 1.8 V, VIL = 0 V (Note 9)	1.8	-0.25	ns
		VIN = 2.5 V, VIL = 0 V (Note 9)	2.5	-0.6	
		VIN = 3.3 V, VIL = 0 V (Note 9)	3.3	-0.8	
Quiet output maximum dynamic VOL	VOLV	VIN = 1.8 V, VIL = 0 V (Note 9)	1.8	1.5	ns
		VIN = 2.5 V, VIL = 0 V (Note 9)	2.5	1.9	
		VIN = 3.3 V, VIL = 0 V (Note 9)	3.3	2.2	
Quiet output maximum dynamic VOH	VOHP	VIN = 1.8 V, VIL = 0 V (Note 9)	1.8	1.5	ns
		VIN = 2.5 V, VIL = 0 V (Note 9)	2.5	1.9	
		VIN = 3.3 V, VIL = 0 V (Note 9)	3.3	2.2	

Note 9: Parameter guaranteed by design.

Capacitive Characteristics (Ta = 25°C)

Characteristics	Symbol	Test Condition	VCC (V)	Typ.	Unit
			1.8, 2.5, 3.3	4	pF
Power dissipation capacitance	C _{PD}	f _{IN} = 10 MHz (Note 10)	1.8, 2.5, 3.3	7	pF

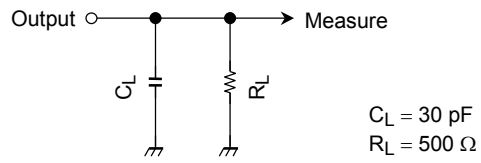
Note 10: C_{PD} is defined as the value of the internal equivalent capacitance which is calculated from the operating current consumption without load.

Average operating current can be obtained by the equation:

$$I_{CC (opr.)} = C_{PD} \cdot V_{CC} \cdot f_{IN} + I_{CC}/2$$

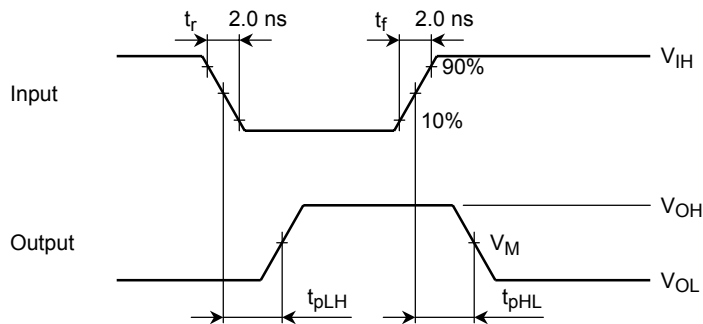
Test Circuit

Figure 1



AC Waveform

Figure 2 t_{pLH}, t_{pHL}

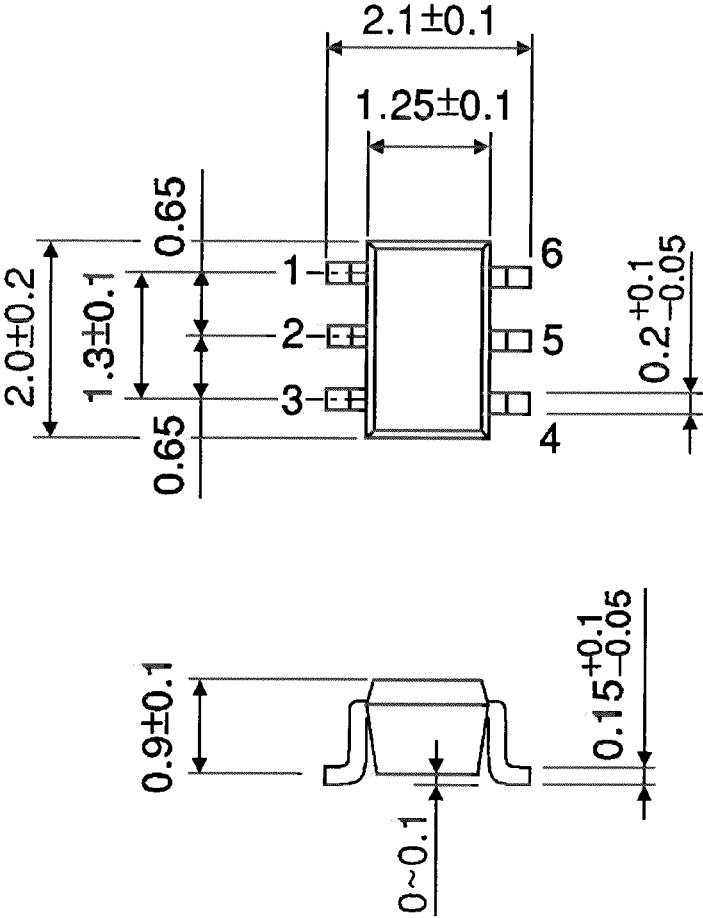


Symbol	V _{CC}		
	3.3 ± 0.3 V	2.5 ± 0.2 V	1.8 V
V _{IH}	2.7 V	V _{CC}	V _{CC}
V _M	1.5 V	V _{CC} /2	V _{CC} /2

Package Dimensions

SSOP6-P-0.65A

Unit: mm



Weight: 0.0068 g (typ.)

RESTRICTIONS ON PRODUCT USE

000707EBA

- TOSHIBA is continually working to improve the quality and reliability of its products. Nevertheless, semiconductor devices in general can malfunction or fail due to their inherent electrical sensitivity and vulnerability to physical stress. It is the responsibility of the buyer, when utilizing TOSHIBA products, to comply with the standards of safety in making a safe design for the entire system, and to avoid situations in which a malfunction or failure of such TOSHIBA products could cause loss of human life, bodily injury or damage to property.
In developing your designs, please ensure that TOSHIBA products are used within specified operating ranges as set forth in the most recent TOSHIBA products specifications. Also, please keep in mind the precautions and conditions set forth in the "Handling Guide for Semiconductor Devices," or "TOSHIBA Semiconductor Reliability Handbook" etc..
- The TOSHIBA products listed in this document are intended for usage in general electronics applications (computer, personal equipment, office equipment, measuring equipment, industrial robotics, domestic appliances, etc.). These TOSHIBA products are neither intended nor warranted for usage in equipment that requires extraordinarily high quality and/or reliability or a malfunction or failure of which may cause loss of human life or bodily injury ("Unintended Usage"). Unintended Usage include atomic energy control instruments, airplane or spaceship instruments, transportation instruments, traffic signal instruments, combustion control instruments, medical instruments, all types of safety devices, etc.. Unintended Usage of TOSHIBA products listed in this document shall be made at the customer's own risk.
- The products described in this document are subject to the foreign exchange and foreign trade laws.
- The information contained herein is presented only as a guide for the applications of our products. No responsibility is assumed by TOSHIBA CORPORATION for any infringements of intellectual property or other rights of the third parties which may result from its use. No license is granted by implication or otherwise under any intellectual property or other rights of TOSHIBA CORPORATION or others.
- The information contained herein is subject to change without notice.