

TOSHIBA BIPOLAR DIGITAL INTEGRATED CIRCUIT SILICON MONOLITHIC

TD62107P, TD62107BP, TD62107F

4CH HIGH-CURRENT DARLINGTON SINK DRIVER

The TD62107P/BP/F are high-voltage, high-current darlington drivers and enable inputs which can gate the outputs. All units feature integral clamp diodes for switching inductive loads.

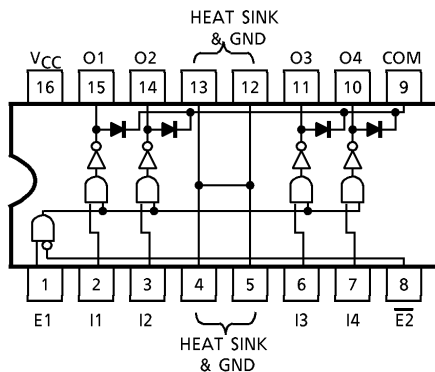
The TD62107P/BP/F have a wide supply voltage range and all input are compatible with TTL and 5V CMOS. Application include relay, hammer, lamp and stepping moter drivers.

FEATURES

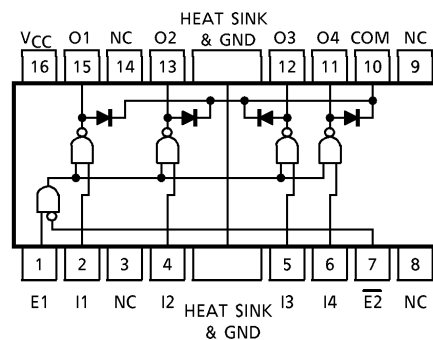
- Output current (single output) 750mA MAX.
- High sustaining voltage output 80V MIN. (TD62107BP)
45V MIN. (TD62107P)
35V MIN. (TD62107F)
- Output clamp diodes
- Enable inputs E1, E2
- Wide supply voltage range $V_{CC} = 4.75 \sim 17V$
- Input compatible with TTL and 5V CMOS
- GND terminal = heat sink
- Package type-P, BP : DIP-16pin
- Package type-F : PFP-16pin

PIN CONNECTION (TOP VIEW)

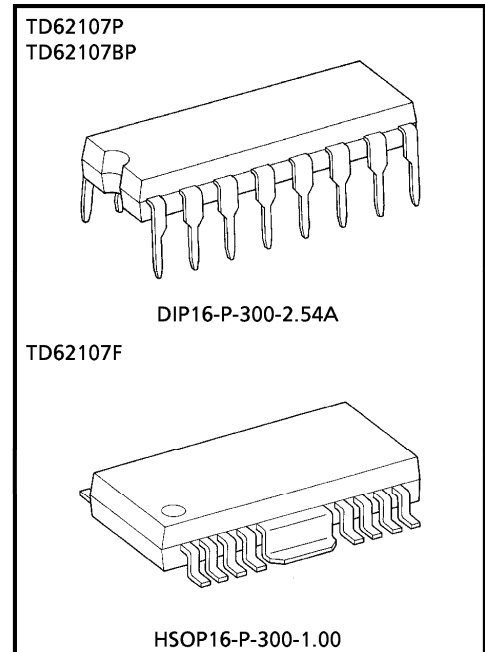
TD62107P / TD62107BP



TD62107F



961001EBA2



Weight
 DIP16-P-300-2.54A : 1.11g (Typ.)
 HSOP16-P-300-1.00 : 0.50g (Typ.)

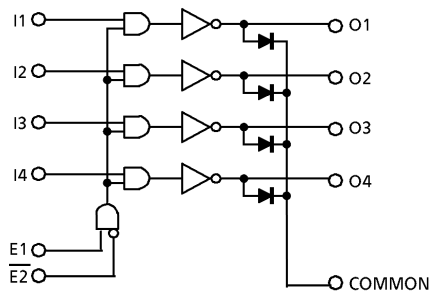
● TOSHIBA is continually working to improve the quality and the reliability of its products. Nevertheless, semiconductor devices in general can malfunction or fail due to their inherent electrical sensitivity and vulnerability to physical stress. It is the responsibility of the buyer, when utilizing TOSHIBA products, to observe standards of safety, and to avoid situations in which a malfunction or failure of a TOSHIBA product could cause loss of human life, bodily injury or damage to property. In developing your designs, please ensure that TOSHIBA products are used within specified operating ranges as set forth in the most recent products specifications. Also, please keep in mind the precautions and conditions set forth in the TOSHIBA Semiconductor Reliability Handbook.

● The products described in this document are subject to foreign exchange and foreign trade control laws.

● The information contained herein is presented only as a guide for the applications of our products. No responsibility is assumed by TOSHIBA CORPORATION for any infringements of intellectual property or other rights of the third parties which may result from its use. No license is granted by implication or otherwise under any intellectual property or other rights of TOSHIBA CORPORATION or others.

● The information contained herein is subject to change without notice.

SCHEMATICS (EACH DRIVER)

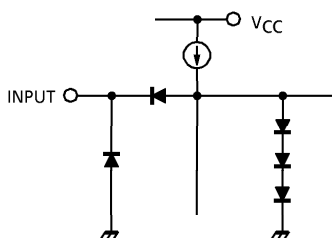


TRUTH TABLE

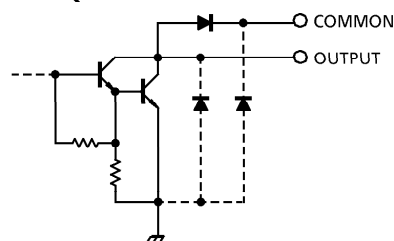
E1	E2	I1 ~ I4	O1~O4
L	L	L or H	Disable OFF
L	H	L or H	Disable OFF
H	L	L or H	Enable In
H	H	L or H	Disable OFF

In = I1 ~ I4

INPUT EQUIVALENT CIRCUIT



OUTPUT EQUIVALENT CIRCUIT



(Note) The input and output parasitic diodes cannot be used as clamp diodes.

MAXIMUM RATINGS (Ta = 25°C)

CHARACTERISTIC		SYMBOL	RATING	UNIT
Supply Voltage		V _{CC}	-0.5~17	V
Output Sustaining Voltage	P	V _{CE (SUS)}	-0.5~45	V
	BP		-0.5~80	
	F		-0.5~35	
Output Current		I _{OUT}	750	mA
Input Voltage		V _{IN}	-0.5~V _{CC} +0.5	V
Clamp Diode Reverse Voltage	P	V _R	45	V
	BP		80	
	F		35	
Clamp Diode Forward Current	P, F	I _F	500	mA
	BP		750	
Power Dissipation	P, BP	P _D	2.7 (Note 1)	W
	F		1.4 (Note 2)	
Operating Temperature		T _{opr}	-40~85	°C
Storage Temperature		T _{stg}	-55~150	°C

(Note 1) On Glass Epoxy (50×50×1.6mm Cu 50%)

(Note 2) On Glass Epoxy (60×30×1.6mm Cu 30%)

RECOMMENDED OPERATING CONDITIONS (Ta = -40~85°C)

CHARACTERISTIC		SYMBOL	CONDITION	MIN.	TYP.	MAX.	UNIT	
Supply Voltage		V _{CC}		4.75	—	15	V	
Output Sustaining Voltage	P	V _{CE (SUS)}		0	—	45	V	
	BP			0	—	80		
	F			0	—	35		
Output Current	P, F	I _{OUT}	T _{pw} = 25ms, Duty = 75%, 1 Circuit	0	—	500	mA	
	BP		T _{pw} = 25ms, Duty = 10%, 4 Circuits	0	—	750		
	P, BP		T _{pw} = 25ms, 4 Circuits	Duty = 30%	0	—		400
				Duty = 40%	—	—		300
Input Voltage		V _{IN}		0	—	V _{CC}	V	
Clamp Diode Reverse Voltage	P	V _R		—	—	45	V	
	BP			—	—	80		
	F			—	—	35		
Clamp Diode Forward Current	P, F	I _F		—	—	500	mA	
	BP			—	—	750		
Power Dissipation	P, BP	P _D	(Note)	—	—	1.0	W	
	F			—	—	0.7		

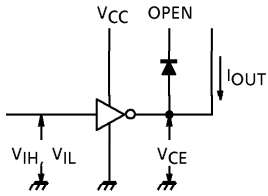
(Note) On Glass Epoxy PCB (60×30×1.6mm Cu 30%)

ELECTRICAL CHARACTERISTICS (Ta = 25°C)

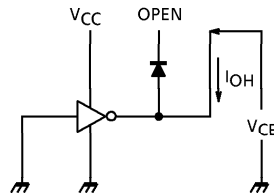
CHARACTERISTIC		SYMBOL	TEST CIRCUIT	TEST CONDITION	MIN.	TYP.	MAX.	UNIT
Input Voltage	"H" Level	V_{IH}	1		2.0	—	V_{CC}	V
	"L" Level	V_{IL}			—	—	0.8	
Output Current	"H" Level	P	2	$V_{CE} = 45V, T_a = 75^\circ C$	—	—	100	μA
		BP		$V_{CE} = 80V, T_a = 85^\circ C$	—	—	100	
		F		$V_{CE} = 35V, T_a = 85^\circ C$	—	—	100	
Output Voltage	"L" Level	P, F	3	$I_{OUT} = 50mA$	—	—	1.3	V
		BP		$I_{OUT} = 750mA$	—	—	1.6	
Input Current	"H" Level	I_{IH}	4	$V_{IN} = 13V$	—	—	100	μA
	"L" Level	I_{IL}	5	$V_{IN} = 0.4V$	—	—	-0.3	mA
Clamp Diode Reverse Current		P	6	$V_R = 45V$	—	—	100	μA
		BP		$V_R = 80V$	—	—	100	
		F		$V_R = 35V$	—	—	100	
Clamp Diode Forward Voltage		P, F	7	$I_F = 500mA$	—	—	2.0	V
		BP		$I_F = 750mA$	—	—	2.0	
Supply Current	Output "H"	I_{CC}	4	$V_{CC} = 13V, V_{IN} = 0V, OUTPUT OPEN$	—	—	13	mA
	Output "L"		5	$V_{CC} = 13V, V_{IN} = 5V, OUTPUT OPEN$	—	—	17	
Turn-On Delay		P	8	$V_{CC} = 5V, R_L = 90\Omega$ $C_L = 15pF, V_{OUT} = 45V$	—	5	—	μs
		BP		$V_{CC} = 5V, V_{OUT} = 80V$ $R_L = 160\Omega$	—	0.4	—	
		F		$V_{CC} = 5V, R_L = 70\Omega$ $C_L = 15pF, V_{OUT} = 35V$	—	5	—	
Turn-Off Delay		P	8	$V_{CC} = 5V, R_L = 90\Omega$ $C_L = 15pF, V_{OUT} = 45V$	—	5	—	μs
		BP		$V_{CC} = 5V, V_{OUT} = 80V$ $R_L = 160\Omega$	—	1.7	—	
		F		$V_{CC} = 5V, R_L = 70\Omega$ $C_L = 15pF, V_{OUT} = 35V$	—	5	—	

TEST CIRCUIT

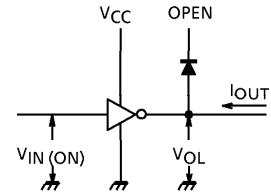
1. V_{IH} , V_{IL}



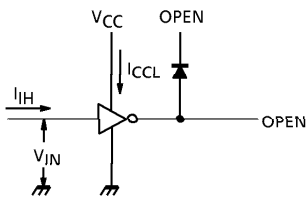
2. I_{OH}



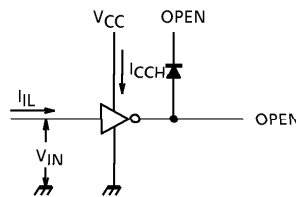
3. V_{OL}



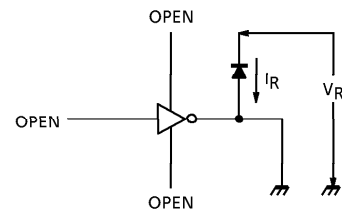
4. I_{IH} , I_{CCL}



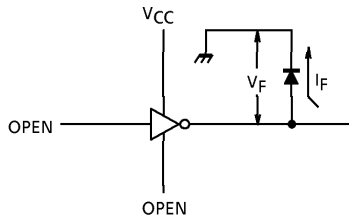
5. I_{IL} , I_{CCH}



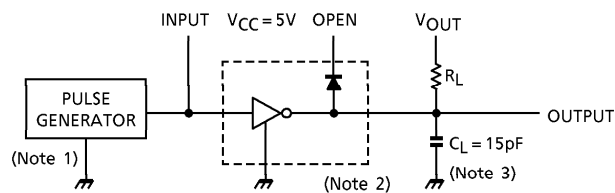
6. I_R



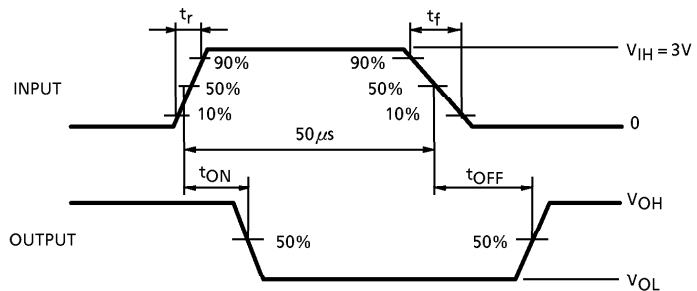
7. V_F



8. t_{ON} , t_{OFF}



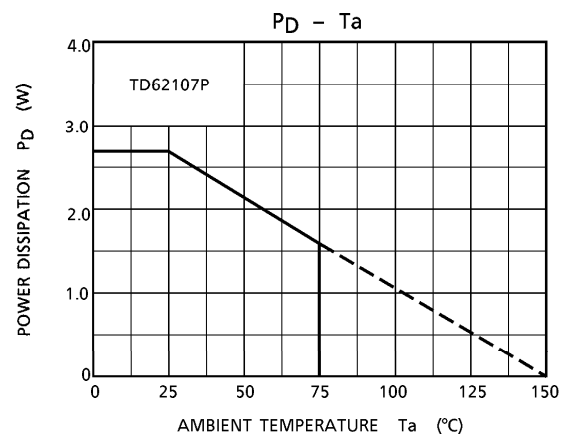
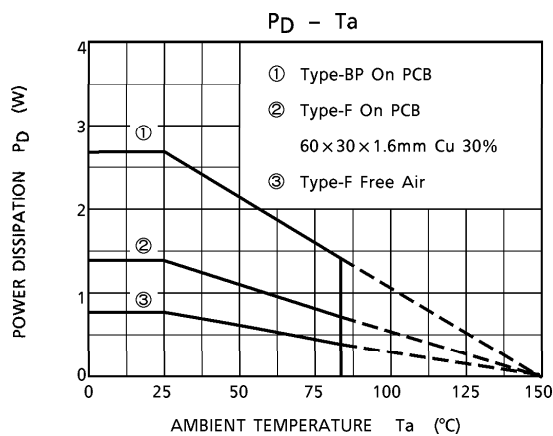
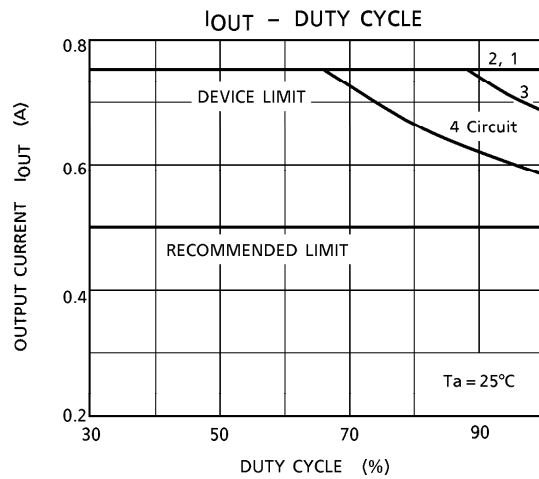
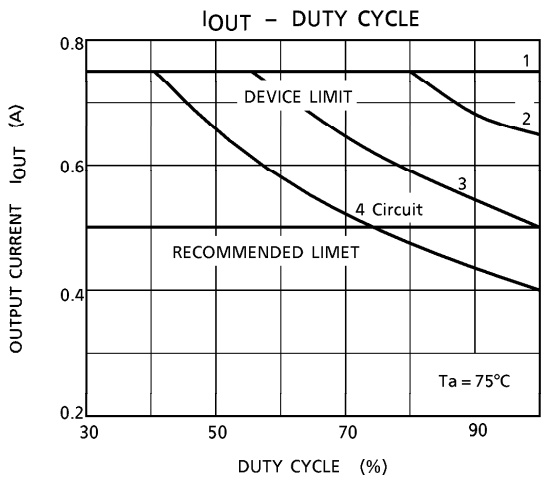
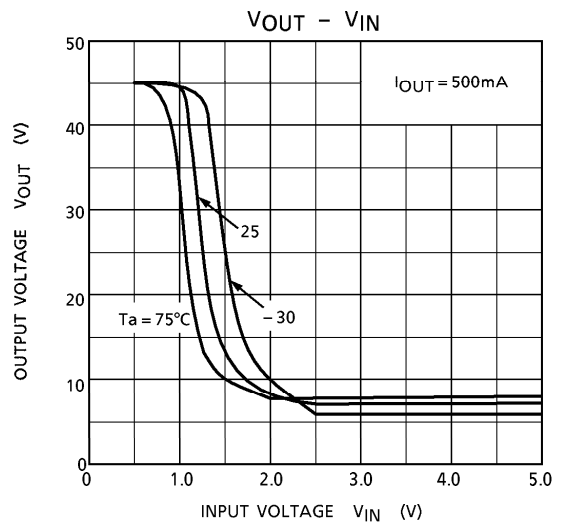
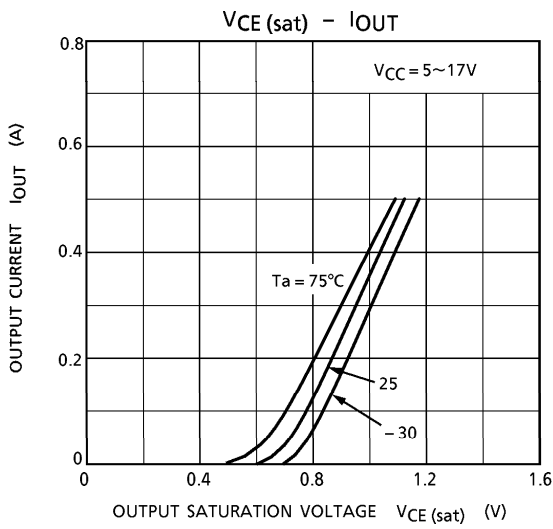
Input condition



- (Note 1) Pulse Width $50\mu s$, Duty Cycle 10%
Output Impedance 50Ω , $t_r \leq 5ns$, $t_f \leq 10ns$
- (Note 2) $V_{IH} = 3V$, $E1 = V_{IH}$, $\overline{E2} = GND$, $V_{CC} = 5V$
- (Note 3) C_L includes probe and jig capacitance

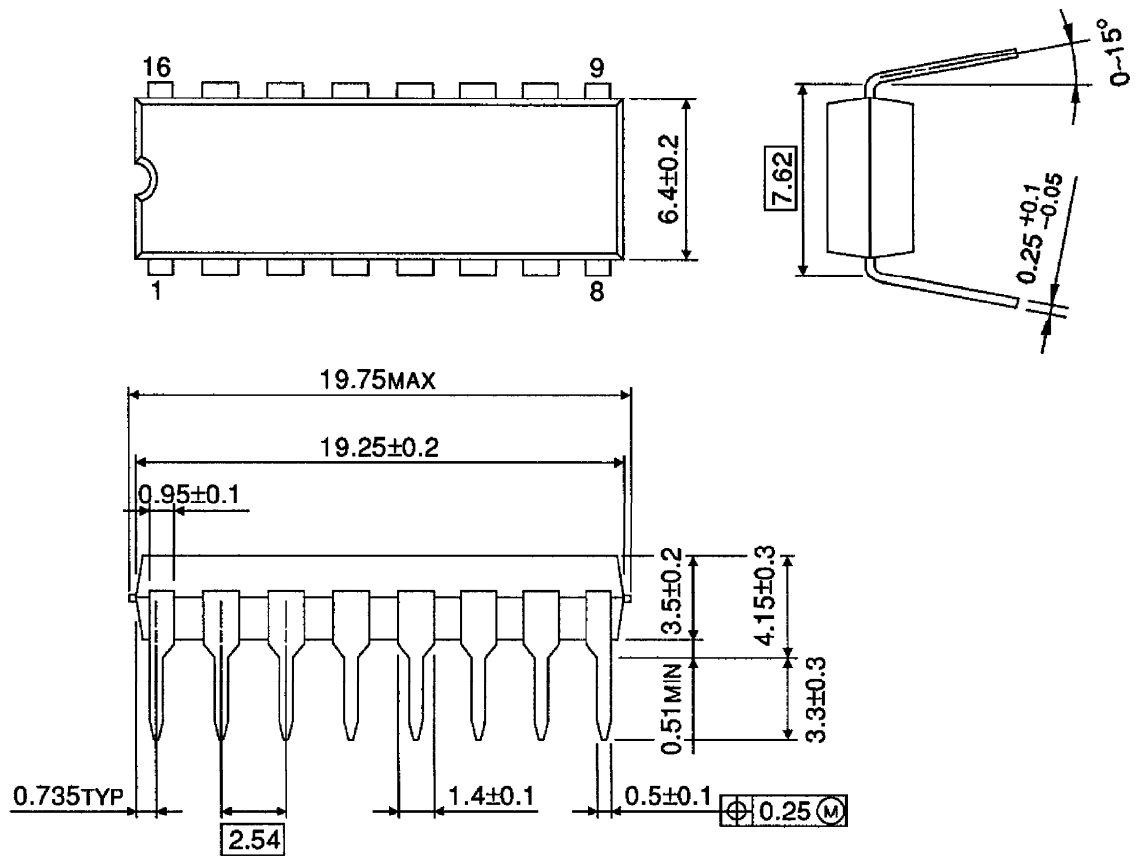
PRECAUTIONS for USING

Utmost care is necessary in the design of the output line, V_{CC} , COMMON and GND line since IC may be destroyed due to short-circuit between outputs, air contamination fault, or fault by improper grounding.



OUTLINE DRAWING
DIP16-P-300-2.54A

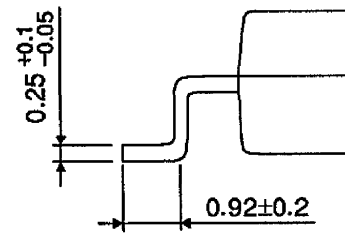
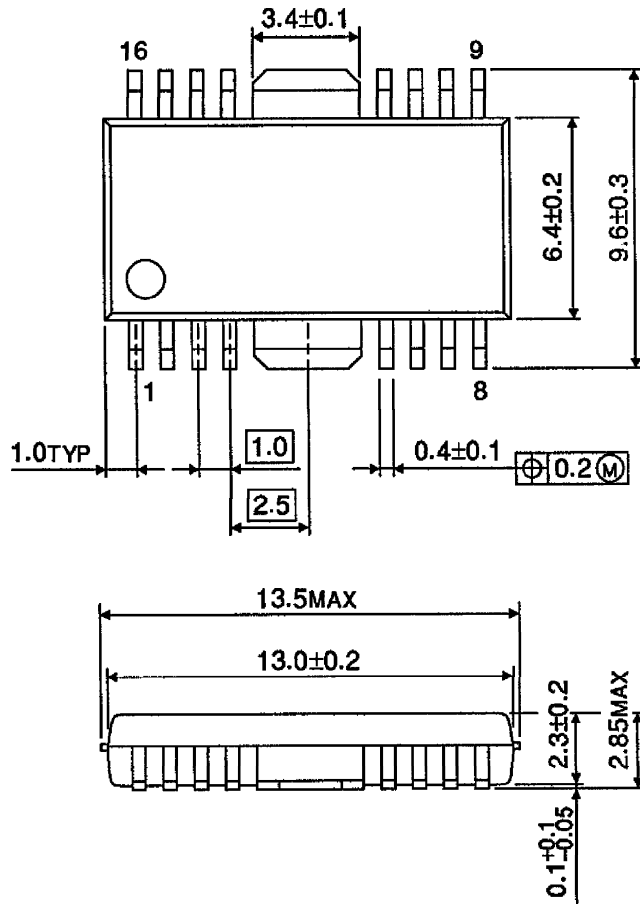
Unit : mm



Weight : 1.11g (Typ.)

OUTLINE DRAWING
HSOP16-P-300-1.00

Unit : mm



Weight : 0.50g (Typ.)