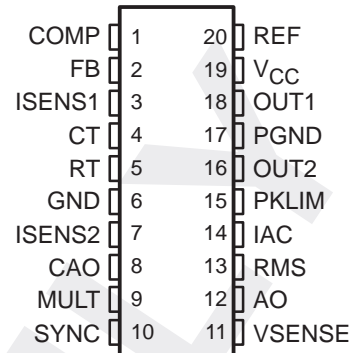


# TLS1242, TLS1244 CURRENT-MODE PWM CONTROLLER WITH POWER-FACTOR CORRECTOR

SLVS161 – MAY 1997

- Single-Chip Solution for High-Power-Factor Switching Power Supply
- Current-Mode PWM Controller
- Fixed-Frequency Average-Current Power-Factor Corrector (PFC) Synchronized with PWM Controller
- Full Range ac Operation
- Low Start-Up Current
- Pulse-by-Pulse Current Limiting for PFC
- Undervoltage Lockout with Hysteresis
- Internally Trimmed Bandgap Reference
- External Synchronous Pin
- Overvoltage Protection for PFC
- Upper 8 Pins Configuration Same as UC3842

N OR DW PACKAGE  
(TOP VIEW)



## description

The TLS1242 and TLS1244 are designed as optimal high-power-factor switching power supply systems with minimum external components. The current-mode PWM controller and the fixed-frequency average-current power-factor corrector (PFC) of each device are combined into a 20-pin DIP package. Internally implemented circuits include: undervoltage lockout (UVLO), featuring a low start-up current; a precision reference that can be trimmed for accuracy at the error amplifier input; a multiplier; two PWM comparators; overvoltage protection (OVP); and two totem-pole output stages designed to source or sink current. The output stage is suitable for driving n-channel MOSFETs, and is low when in the off state.

The fixed-frequency average-current-mode power-factor-correction controller circuit is synchronized with a current-mode PWM controller internally. Fixed-frequency power-factor correction helps prevent problems in frequency-sensitive applications such as video monitor, telecom, RF transmitters, and medical imaging. The synchronization of the PFC with the PWM controller helps reduce EMI problems as well.

The pin assignment of both the TLS1242 and the TLS1244 is intended to accommodate the UC3842/3844 as well, if PFC is not required in the application. The upper pins (1, 2, 3, 4, 17, 18, 19 and 20) have the same pin assignment as the UC3842, making the current-mode SPS application more flexible.

The PWM portion of the TLS1242 can operate to duty cycle approaching 100%. A duty cycle range of 0 to 50% is obtained using the TLS1244.

The TLS1242 and TLS1244 are characterized for operation from 0°C to 70°C.

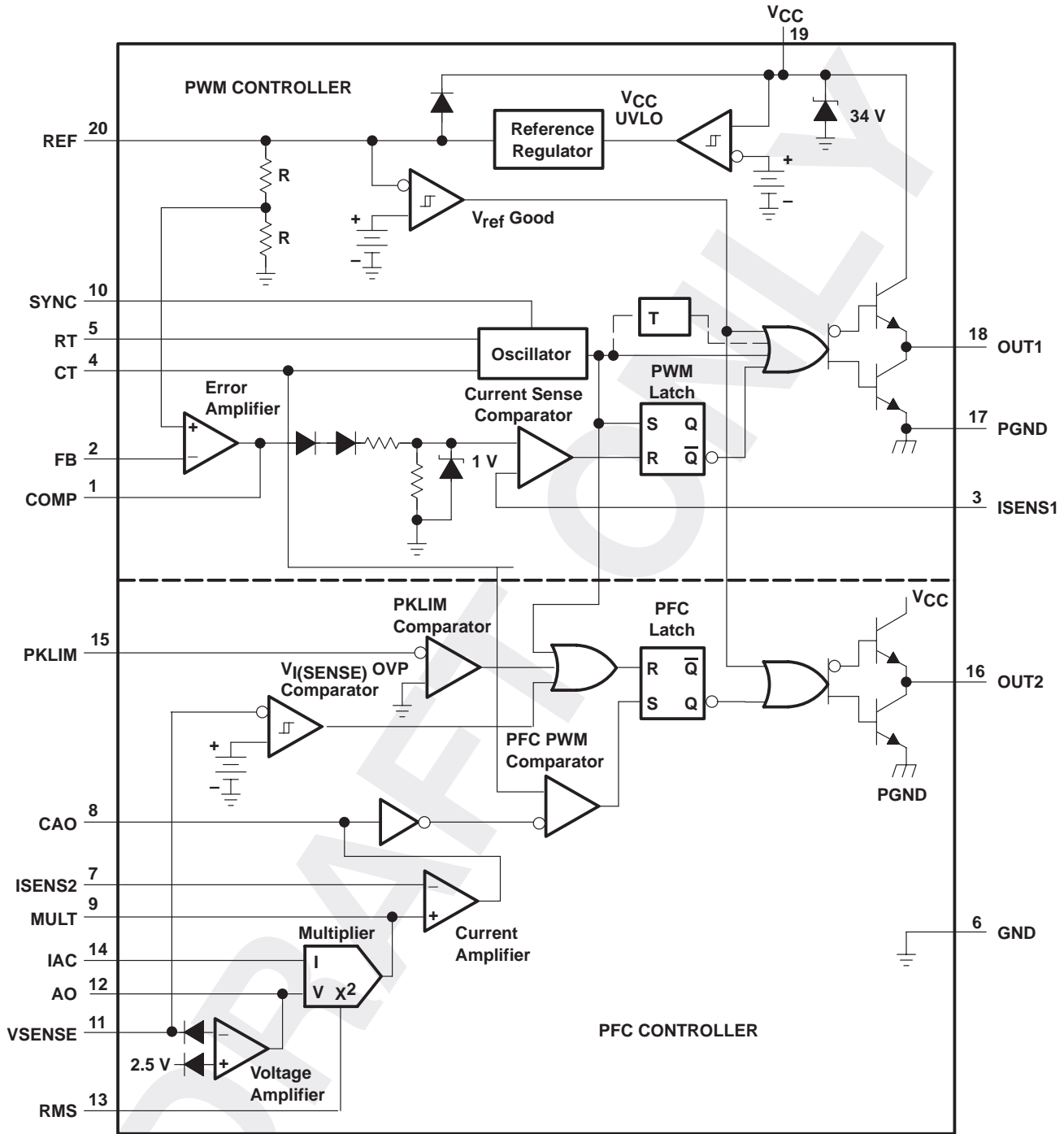
PRODUCT PREVIEW

# TLS1242, TLS1244 CURRENT-MODE PWM CONTROLLER WITH POWER-FACTOR CORRECTOR

SLVS161 – MAY 1997

## functional block diagram

PRODUCT PREVIEW



### Terminal Functions

TERMINAL NAME	NO.	DESCRIPTION
AO	12	Voltage amplifier output for frequency compensation
CAO	8	Current amplifier output for PFC
COMP	1	Error amplifier output for frequency compensation
CT	4	Oscillator timing control
FB	2	Error amplifier inverting input for PWM
GND	6	Control section ground
IAC	14	Current multiplier input
ISENS1	3	Input from current-sense device of PWM, connected to current-sense comparator
ISENS2	7	Input from current sense device of PFC, connected to current amplifier
MULT	9	Multiplier output
OUT1	18	Totem-pole output for PWM
OUT2	16	Totem-pole output for PFC
PGND	17	Output section ground
PKLIM	15	Peak current limit for PFC
REF	20	Output for the 5 V reference
RMS	13	Input for PFC rms line compensation
RT	5	Oscillator charge current control
SYNC	10	External synchronous signal input pin
V <sub>CC</sub>	19	Positive supply
VSENSE	11	Voltage amplifier inverting input for PFC

**absolute maximum ratings over operating free-air temperature (unless otherwise noted)**

Supply voltage, V <sub>DD</sub> (see Note 1)	Self-limiting
Analog input voltage range at FB, ISENS, VSENSE, RMS and PKLIM	0.3 V to 6.3 V
Voltage at OUT1 and OUT2	30 V
Supply current, I <sub>CC</sub>	TBD
Amplifier output sink current	10 mA
Continuous total power dissipation	See dissipation rating table
Operation free-air temperature range, T <sub>A</sub>	0°C to 70°C

NOTE 1: All voltages are with respect to GND. Maximum package power dissipation limits must be observed.

**DISSIPATION RATING TABLE**

PACKAGE	T <sub>A</sub> ≤ 25°C POWER RATING	DERATING FACTOR ABOVE T <sub>A</sub> = 25°C	T <sub>A</sub> = 70°C POWER RATING	T <sub>A</sub> = 85°C POWER RATING
N	1874 mW	15 mW/°C	1200 mW	975 mW
DW	1430 mW	11.4 mW/°C	915 mW	744 mW

**PRODUCT PREVIEW**



# TLS1242, TLS1244

## CURRENT-MODE PWM CONTROLLER WITH POWER-FACTOR CORRECTOR

SLVS161 – MAY 1997

### recommended operating conditions

	MIN	NOM	MAX	UNIT
Supply voltage, $V_{CC}$			20	V
Input voltage at $C_T$ input	0		5.5	V
Input voltage at FB, ISENSE, VSENSE, RMS, SYNC and PKLIM	-0.3		5.5	V
Voltage on output	0		20	V
Supply current, externally limited, $I_{CC}$		2.5		mA
Average output current, $I_O$			200	mA
Reference output current			-20	mA
Timing capacitor, $C_T$	1	2.2		nF
Oscillator frequency		100	200	kHz
Operating free-air temperature, $T_A$	0		70	°C
Input current at IAC			750	μA

electrical characteristics over recommended operating free-air temperature range,  $V_{CC} = 15$  V (see Note 3),  $R_T = 47$  kΩ,  $C_T = 2.2$  nF,  $PKLIM = 1$  V,  $RMS = 1.5$  V,  $IAC = 100$  μA,  $ISENSE = 0$  V,  $CAO = 4$  V,  $AO = 3.5$  V,  $VSENSE = 3$  V,  $T_A =$  full range (unless otherwise specified)

### reference

PARAMETER	TEST CONDITIONS	MIN	TYP	MAX	UNIT
Output voltage	$I_O = 1$ mA, $T_A = 25^\circ\text{C}$	4.95	5	5.05	V
Line regulation	$V_{CC} = 12$ V to 20 V		6	20	mV
Load regulation	$I_O = 1$ mA to 20 mA		6	25	mV
Temperature coefficient of output voltage			0.2	0.4	mV/°C
Output voltage, worst-case variation	$V_{CC} = 12$ V to 20 V, $I_O = 1$ mA to 20 mA	4.9		5.1	V
Output noise voltage	$f = 10$ Hz to 10 kHz, $T_A = 25^\circ\text{C}$		50	100	μV
Output voltage, long-term drift	After 1000 at $T_A = 125^\circ\text{C}$		5	25	mV
Short-circuit output current		-30	-100	-180	mA

### oscillator

PARAMETER	TEST CONDITIONS	MIN	TYP	MAX	UNIT
Oscillator frequency	$T_A = 125^\circ\text{C}$	43	48	53	kHz
Frequency change with supply voltage	$V_{CC} = 12$ V to 20 V		1%	2%	
Frequency change with temperature	$T_A = 0^\circ\text{C}$ to $70^\circ\text{C}$		1%		
Peak-to-peak amplitude voltage at $C_T$			4.6		V
Valley-point voltage	$T_A = 25^\circ\text{C}$	1.15		1.65	V

### current sense comparator

PARAMETER	TEST CONDITIONS	MIN	TYP	MAX	UNIT
Voltage amplification	See Note 2, See Note 3	2.85	3	3.15	V/V
Current-sense comparator threshold voltage	COMP at 5 V, See Note 2	0.9	1	1.1	V
Supply voltage rejection ratio	$V_{CC} = 12$ V to 20 V, See Note 2		70		dB
Input bias current			-2	-10	μA
Delay time to output			150	300	ns

PRODUCT PREVIEW



electrical characteristics over recommended operating free-air temperature range,  $V_{CC} = 15\text{ V}$  (see Note 2),  $R_T = 47\text{ k}\Omega$ ,  $C_T = 2.2\text{ nF}$ ,  $PKLIM = 1\text{ V}$ ,  $RMS = 1.5\text{ V}$ ,  $IAC = 100\text{ }\mu\text{A}$ ,  $I_{SENSE} = 0\text{ V}$ ,  $CAO = 4\text{ V}$ ,  $AO = 3.5\text{ V}$ ,  $V_{SENSE} = 3\text{ V}$ ,  $T_A = \text{full range}$  (unless otherwise specified)

#### comparator

PARAMETER	TEST CONDITIONS	MIN	TYP	MAX	UNIT
OVP threshold voltage		2.6	2.7	2.8	V
OVP hysteresis voltage		80	115	150	mV
Threshold voltage, PKLIM		-0.2	0	0.2	V
Delay to OUT2, PKLIM	$V_{SENSE} < 2.5\text{ V}$ , See Note 4		150	300	ns

#### voltage amplifier

PARAMETER	TEST CONDITIONS	MIN	TYP	MAX	UNIT
Input voltage	AO at 2.5 V	2.42		2.58	V
Bias current, $V_{SENSE}$	$V_{SENSE} = 2.5\text{ V}$	-500	-25	500	nA
Open-loop voltage amplification	$V_O = 2\text{ V to }6\text{ V}$	70	100		dB
Gain-bandwidth product	$f_t = 100\text{ kHz}$ , $10\text{ mV }V_{O(PP)}$ , See Note 4	0.7	1		MHz
Supply-voltage rejection ratio	$V_{CC} = 12\text{ V to }20\text{ V}$	60	70		dB
Output short-circuit current	$V_O = 0\text{ V}$		-1.5	-3.5	mA
High-level output voltage	$I_L = -500\text{ }\mu\text{A}$	5	6		V
Low-level output voltage	$I_L = 500\text{ }\mu\text{A}$		0.7	1.1	V

#### current amplifier

PARAMETER	TEST CONDITIONS	MIN	TYP	MAX	UNIT
Input offset voltage	$V_{I(CM)} = 0\text{ V}$	-2		2	mV
Input bias current	$V_{I(CM)} = 0\text{ V}$	-500		500	nA
Open-loop voltage amplification	$V_{I(CM)} = 0\text{ V}$ , $V_O = 2\text{ V to }6\text{ V}$	80	110		dB
Gain-bandwidth product	$f_t = 100\text{ kHz}$ , $10\text{ mV }V_{O(PP)}$ , See Note 4	1	3		MHz
Supply-voltage rejection ratio	$V_{CC} = 12\text{ V to }20\text{ V}$	60	70		dB
Output short-circuit current	$V_O = 0\text{ V}$		-1.5	-3.5	mA
High-level output voltage	$I_L = -500\text{ }\mu\text{A}$	5	6		V
Low-level output voltage	$I_L = 500\text{ }\mu\text{A}$		0.7	1.1	V

#### multiplier

PARAMETER	TEST CONDITIONS	MIN	TYP	MAX	UNIT
Output current, IAC limited	$IAC = 100\text{ }\mu\text{A}$ , $RMS = 1\text{ V}$	-220	-200	-170	$\mu\text{A}$
Output current, zero	$IAC = 0\text{ }\mu\text{A}$	-2	-0.2	2	$\mu\text{A}$
Output current, power limited	$RMS = 1.5\text{ V}$ , $AO = 6\text{ V}$	-220	-200	-170	$\mu\text{A}$
Output current	$RMS = 1.5\text{ V}$ , $AO = 5\text{ V}$		-156		$\mu\text{A}$
	$RMS = 1.5\text{ V}$ , $AO = 2\text{ V}$		-22		
	$RMS = 5\text{ V}$ , $AO = 5\text{ V}$		-14		
	$RMS = 5\text{ V}$ , $AO = 2\text{ V}$		-2		
Gain constant	$RMS = 1.5\text{ V}$ , $AO = 6\text{ V}$ , See Note 5	-1.1	-1	-0.9	A/A

# TLS1242, TLS1244

## CURRENT-MODE PWM CONTROLLER WITH POWER-FACTOR CORRECTOR

SLVS161 – MAY 1997

electrical characteristics over recommended operating free-air temperature range,  $V_{CC} = 15\text{ V}$  (see Note 3),  $R_T = 47\text{ k}\Omega$ ,  $C_T = 2.2\text{ nF}$ ,  $PKLIM = 1\text{ V}$ ,  $RMS = 1.5\text{ V}$ ,  $IAC = 100\text{ }\mu\text{A}$ ,  $I_{SENS} = 0\text{ V}$ ,  $CAO = 4\text{ V}$ ,  $AO = 3.5\text{ V}$ ,  $V_{SENSE} = 3\text{ V}$ ,  $T_A = \text{full range}$  (unless otherwise specified)

### error amplifier

PARAMETER	TEST CONDITIONS	MIN	TYP	MAX	UNIT
Feedback input voltage	COMP = 2.5 V	2.42		2.58	V
Input bias current	FB = 2.5 V		-0.3	-2	$\mu\text{A}$
Open-loop voltage amplification	$V_O = 2\text{ V to }4\text{ V}$	65	90		dB
Gain-bandwidth product	$f_l = 100\text{ kHz}$ , $10\text{ mV }V_{O(PP)}$ , See Note 4	0.7	1		MHz
Supply-voltage rejection ratio	$V_{CC} = 12\text{ V to }20\text{ V}$	60	70		dB
Output sink current	FB at 2.7 V, COMP AT 1.1 V	2	6		mA
Output source current	FB at 2.3 V, COMP AT 5 V	-0.5	-0.8		mA
High-level output voltage	FB at 2.3 V, $R_L = 15\text{ k}\Omega$ to GND	5	6		V
Low-level output voltage	FB at 2.7 V, $R_L = 15\text{ k}\Omega$ to REF		0.7	1.1	V

### undervoltage lockout

PARAMETER	TEST CONDITIONS	MIN	TYP	MAX	UNIT
Start-up threshold voltage		14.5	16	17.5	V
Minimum operating voltage after start-up		8.5	10	11.5	V

### output

PARAMETER	TEST CONDITIONS	MIN	TYP	MAX	UNIT
High-level output voltage	$I_{OH} = -20\text{ mA}$	13	13.5		V
	$I_{OH} = -200\text{ mA}$	12	13.5		
Low-level output voltage	$I_{OL} = 20\text{ mA}$		0.2	0.4	V
	$I_{OL} = 200\text{ mA}$		1	2.2	
Rise time	$C_L = 1\text{ nF}$ , $T_A = 25^\circ\text{C}$		50	150	ns
Fall time	$C_L = 1\text{ nF}$ , $T_A = 25^\circ\text{C}$		50	150	ns

### pulse-width-modulator

PARAMETER	TEST CONDITIONS	MIN	TYP	MAX	UNIT
Maximum duty cycle		93%	95%		
Minimum duty cycle				0	

### supply voltage

PARAMETER	TEST CONDITIONS	MIN	TYP	MAX	UNIT
Start-up current			0.7	1.1	mA
Operating supply current	FB and $I_{SENS}$ and $IAC$ at 0 V			30	mA
Limiting voltage	$I_{CC} = 25\text{ mA}$		34		V

- NOTES: 2. Adjust  $V_{CC}$  above the start threshold before setting it to 15 V.  
 3. These parameters are measured at the trip point of the latch with FB at 0 V.  
 4. Voltage amplification is measured between the input at  $I_{SENS1}$  and the output at COMP with the input changing from 0 V to 0.8 V.  
 5. Specified by design, not 100% tested in production  
 6. Gain constant (k) =  $(I_{IAC} \times [V_{I(AO)} - 1.5]) / (V_{I(RMS)}^2 \times I_{I(MULT)})$

PRODUCT PREVIEW



PARAMETER MEASUREMENT INFORMATION

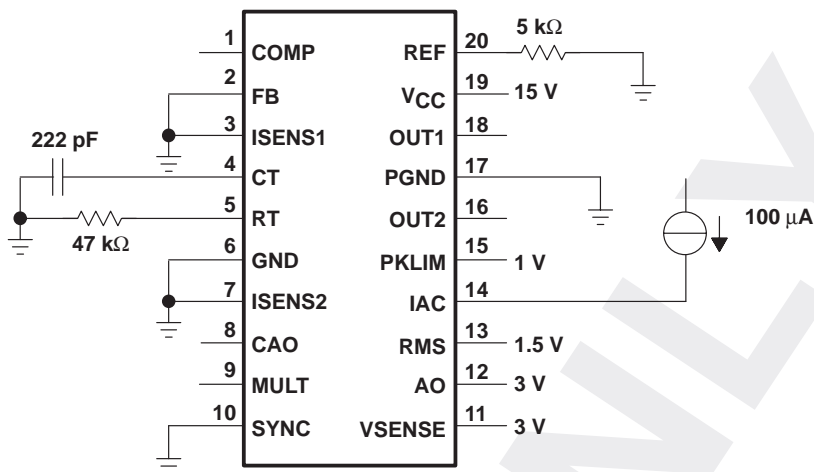
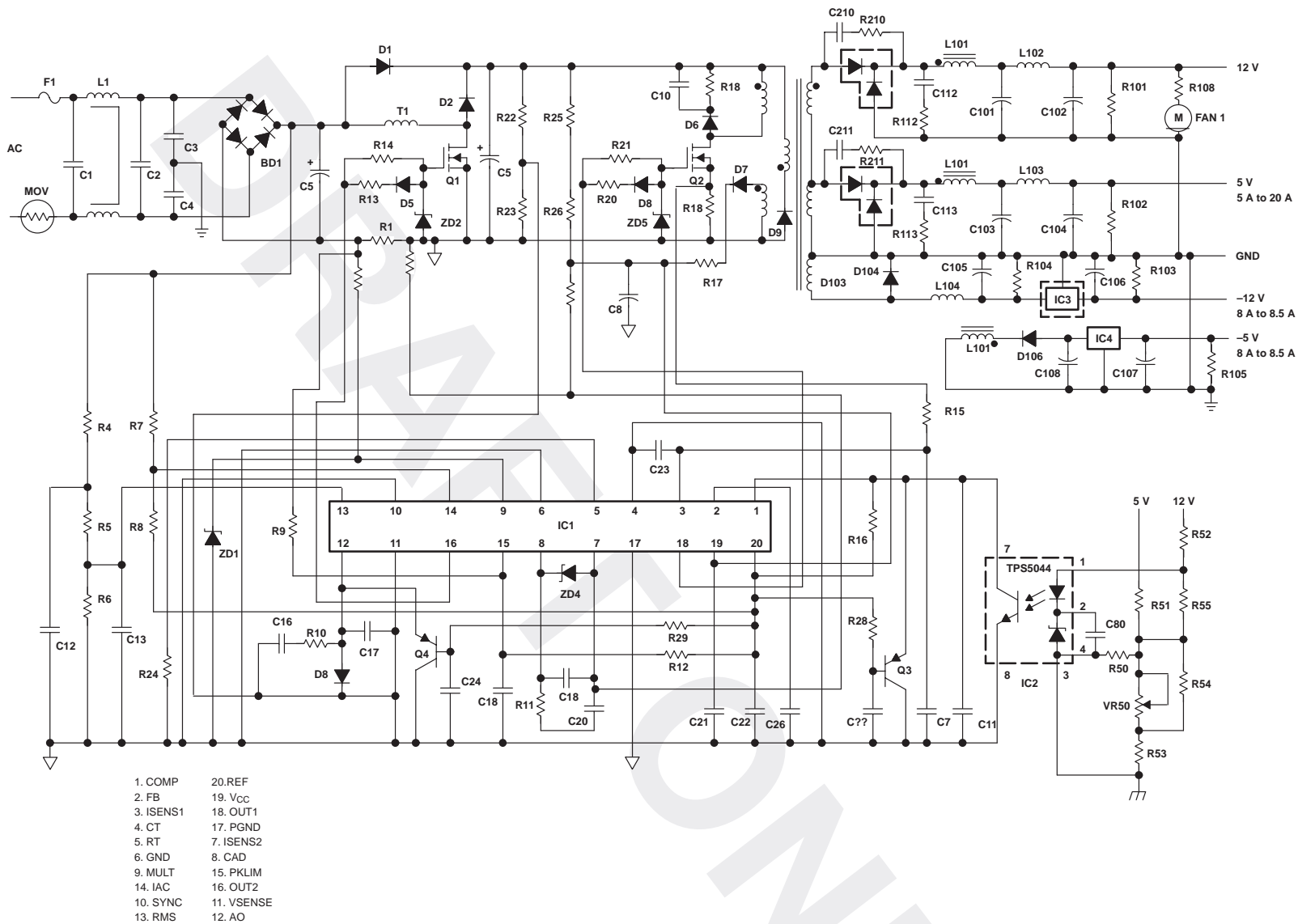


Figure 1. Test Circuit

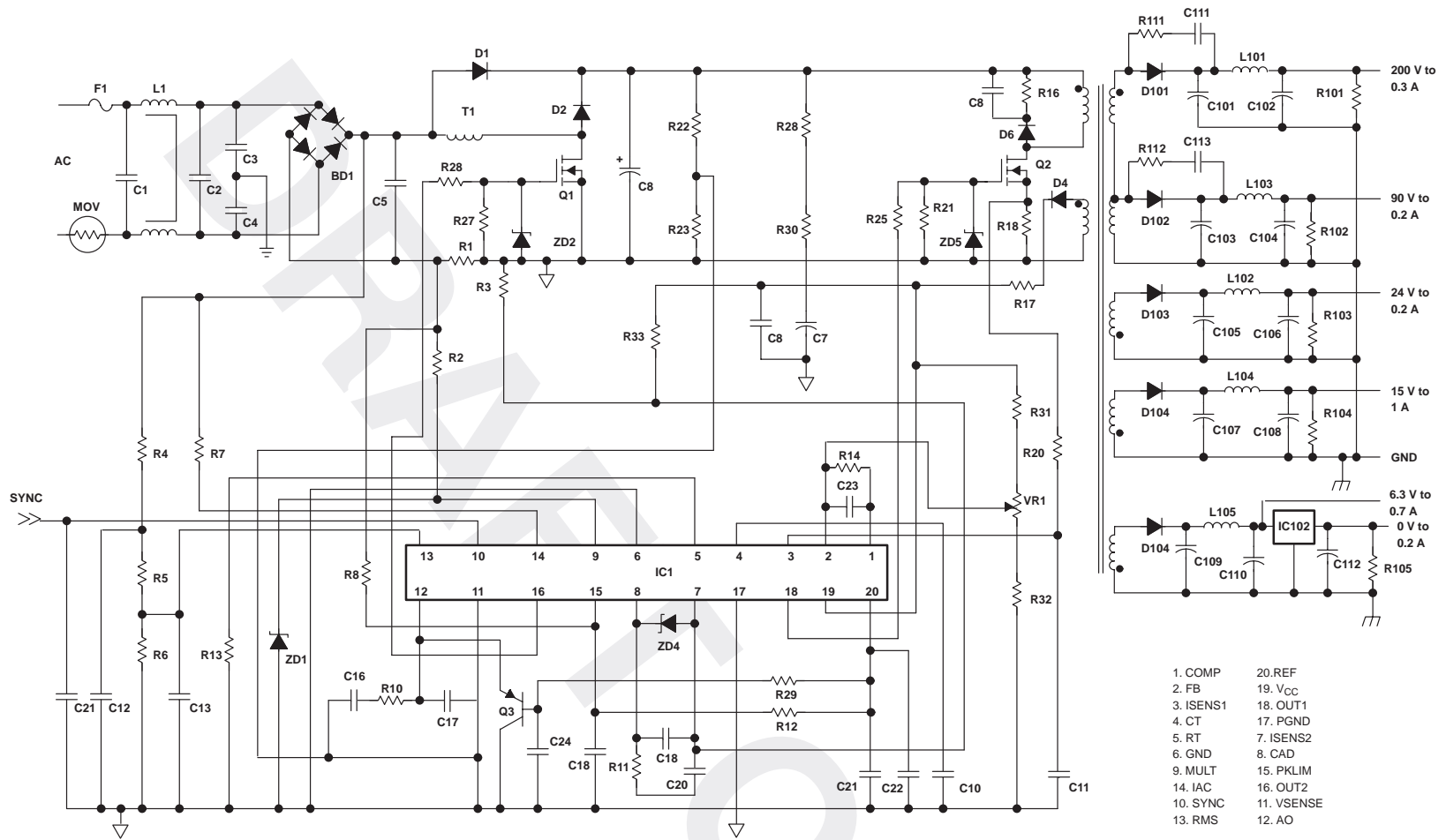
PRODUCT PREVIEW



NOTE: Recommended power MOSFET gate limit resistor, R13, R14, R20, R21 > 20Ω

Figure 2. Application Circuit, Forward





- |          |                     |
|----------|---------------------|
| 1. COMP  | 20. REF             |
| 2. FB    | 19. V <sub>CC</sub> |
| 3. ISEN1 | 18. OUT1            |
| 4. CT    | 17. PGND            |
| 5. RT    | 7. ISEN2            |
| 6. GND   | 8. CAD              |
| 9. MULT  | 15. PKLIM           |
| 14. IAC  | 16. OUT2            |
| 10. SYNC | 11. VSENSE          |
| 13. RMS  | 12. AO              |

NOTE: Recommended power MOSFET gate limit resistor, R25, R26 > 20Ω

Figure 3. Application Circuit, Flyback

**TLS1242, TLS1244**  
**CURRENT-MODE PWM CONTROLLER**  
**WITH POWER-FACTOR CORRECTOR**

SLVS161 – MAY 1997

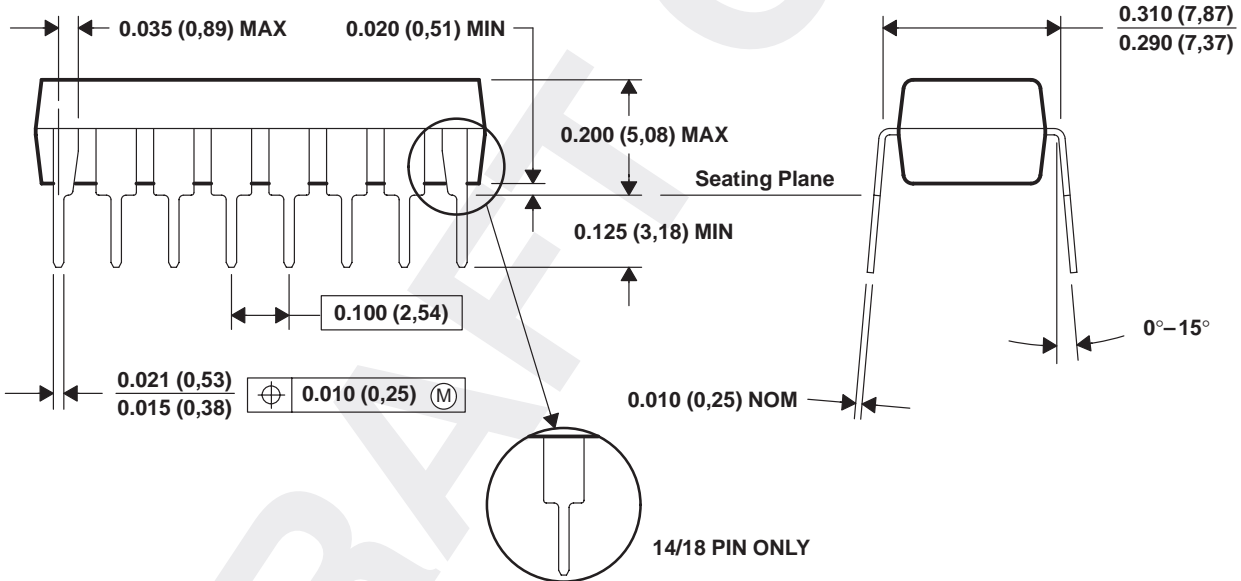
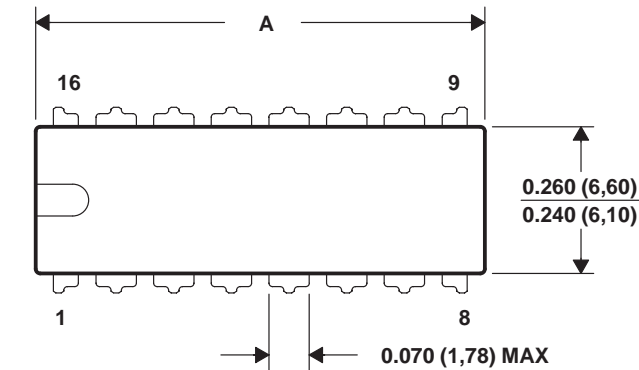
**MECHANICAL DATA**

**N (R-PDIP-T\*\*)**

**PLASTIC DUAL-IN-LINE PACKAGE**

16 PIN SHOWN

DIM \ PINS **	14	16	18	20
A MAX	0.775 (19,69)	0.775 (19,69)	0.920 (23,37)	0.975 (24,77)
A MIN	0.745 (18,92)	0.745 (18,92)	0.850 (21,59)	0.940 (23,88)



4040049/C 08/95

- NOTES: A. All linear dimensions are in inches (millimeters).  
 B. This drawing is subject to change without notice.  
 C. Falls within JEDEC MS-001 (20 pin package is shorter than MS-001.)

PRODUCT PREVIEW

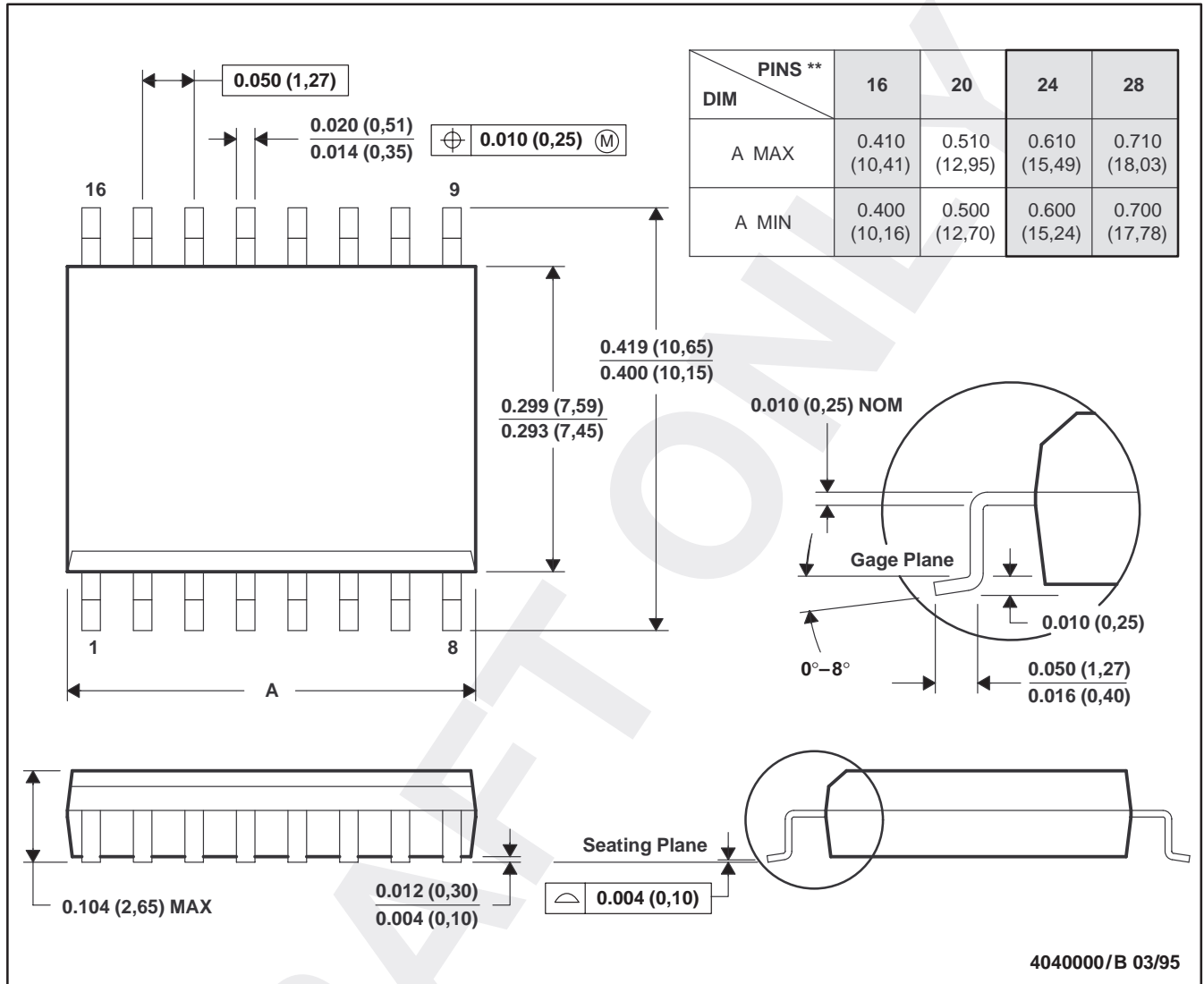


MECHANICAL DATA

DW (R-PDSO-G\*\*)

PLASTIC SMALL-OUTLINE PACKAGE

16 PIN SHOWN



PRODUCT PREVIEW

- NOTES: A. All linear dimensions are in inches (millimeters).  
 B. This drawing is subject to change without notice.  
 C. Body dimensions do not include mold flash or protrusion not to exceed 0.006 (0,15).  
 D. Falls within JEDEC MS-013

**PACKAGING INFORMATION**

Orderable Device	Status <sup>(1)</sup>	Package Type	Package Drawing	Pins	Package Qty	Eco Plan <sup>(2)</sup>	Lead/Ball Finish	MSL Peak Temp <sup>(3)</sup>
TLS1242N	OBSOLETE	PDIP	N	20		TBD	Call TI	Call TI

<sup>(1)</sup> The marketing status values are defined as follows:

**ACTIVE:** Product device recommended for new designs.

**LIFEBUY:** TI has announced that the device will be discontinued, and a lifetime-buy period is in effect.

**NRND:** Not recommended for new designs. Device is in production to support existing customers, but TI does not recommend using this part in a new design.

**PREVIEW:** Device has been announced but is not in production. Samples may or may not be available.

**OBSOLETE:** TI has discontinued the production of the device.

<sup>(2)</sup> Eco Plan - The planned eco-friendly classification: Pb-Free (RoHS) or Green (RoHS & no Sb/Br) - please check <http://www.ti.com/productcontent> for the latest availability information and additional product content details.

**TBD:** The Pb-Free/Green conversion plan has not been defined.

**Pb-Free (RoHS):** TI's terms "Lead-Free" or "Pb-Free" mean semiconductor products that are compatible with the current RoHS requirements for all 6 substances, including the requirement that lead not exceed 0.1% by weight in homogeneous materials. Where designed to be soldered at high temperatures, TI Pb-Free products are suitable for use in specified lead-free processes.

**Green (RoHS & no Sb/Br):** TI defines "Green" to mean Pb-Free (RoHS compatible), and free of Bromine (Br) and Antimony (Sb) based flame retardants (Br or Sb do not exceed 0.1% by weight in homogeneous material)

<sup>(3)</sup> MSL, Peak Temp. -- The Moisture Sensitivity Level rating according to the JEDEC industry standard classifications, and peak solder temperature.

**Important Information and Disclaimer:**The information provided on this page represents TI's knowledge and belief as of the date that it is provided. TI bases its knowledge and belief on information provided by third parties, and makes no representation or warranty as to the accuracy of such information. Efforts are underway to better integrate information from third parties. TI has taken and continues to take reasonable steps to provide representative and accurate information but may not have conducted destructive testing or chemical analysis on incoming materials and chemicals. TI and TI suppliers consider certain information to be proprietary, and thus CAS numbers and other limited information may not be available for release.

In no event shall TI's liability arising out of such information exceed the total purchase price of the TI part(s) at issue in this document sold by TI to Customer on an annual basis.

## IMPORTANT NOTICE

Texas Instruments Incorporated and its subsidiaries (TI) reserve the right to make corrections, modifications, enhancements, improvements, and other changes to its products and services at any time and to discontinue any product or service without notice. Customers should obtain the latest relevant information before placing orders and should verify that such information is current and complete. All products are sold subject to TI's terms and conditions of sale supplied at the time of order acknowledgment.

TI warrants performance of its hardware products to the specifications applicable at the time of sale in accordance with TI's standard warranty. Testing and other quality control techniques are used to the extent TI deems necessary to support this warranty. Except where mandated by government requirements, testing of all parameters of each product is not necessarily performed.

TI assumes no liability for applications assistance or customer product design. Customers are responsible for their products and applications using TI components. To minimize the risks associated with customer products and applications, customers should provide adequate design and operating safeguards.

TI does not warrant or represent that any license, either express or implied, is granted under any TI patent right, copyright, mask work right, or other TI intellectual property right relating to any combination, machine, or process in which TI products or services are used. Information published by TI regarding third-party products or services does not constitute a license from TI to use such products or services or a warranty or endorsement thereof. Use of such information may require a license from a third party under the patents or other intellectual property of the third party, or a license from TI under the patents or other intellectual property of TI.

Reproduction of information in TI data books or data sheets is permissible only if reproduction is without alteration and is accompanied by all associated warranties, conditions, limitations, and notices. Reproduction of this information with alteration is an unfair and deceptive business practice. TI is not responsible or liable for such altered documentation.

Resale of TI products or services with statements different from or beyond the parameters stated by TI for that product or service voids all express and any implied warranties for the associated TI product or service and is an unfair and deceptive business practice. TI is not responsible or liable for any such statements.

Following are URLs where you can obtain information on other Texas Instruments products and application solutions:

<b>Products</b>		<b>Applications</b>	
Amplifiers	<a href="http://amplifier.ti.com">amplifier.ti.com</a>	Audio	<a href="http://www.ti.com/audio">www.ti.com/audio</a>
Data Converters	<a href="http://dataconverter.ti.com">dataconverter.ti.com</a>	Automotive	<a href="http://www.ti.com/automotive">www.ti.com/automotive</a>
DSP	<a href="http://dsp.ti.com">dsp.ti.com</a>	Broadband	<a href="http://www.ti.com/broadband">www.ti.com/broadband</a>
Interface	<a href="http://interface.ti.com">interface.ti.com</a>	Digital Control	<a href="http://www.ti.com/digitalcontrol">www.ti.com/digitalcontrol</a>
Logic	<a href="http://logic.ti.com">logic.ti.com</a>	Military	<a href="http://www.ti.com/military">www.ti.com/military</a>
Power Mgmt	<a href="http://power.ti.com">power.ti.com</a>	Optical Networking	<a href="http://www.ti.com/opticalnetwork">www.ti.com/opticalnetwork</a>
Microcontrollers	<a href="http://microcontroller.ti.com">microcontroller.ti.com</a>	Security	<a href="http://www.ti.com/security">www.ti.com/security</a>
		Telephony	<a href="http://www.ti.com/telephony">www.ti.com/telephony</a>
		Video & Imaging	<a href="http://www.ti.com/video">www.ti.com/video</a>
		Wireless	<a href="http://www.ti.com/wireless">www.ti.com/wireless</a>

Mailing Address: Texas Instruments  
Post Office Box 655303 Dallas, Texas 75265