

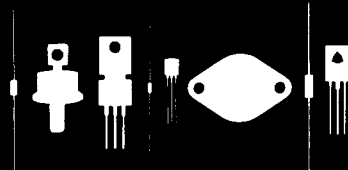
Central  
Semiconductor Corp.

Central  
Semiconductor Corp.

Central  
Semiconductor Corp.

Central<sup>TM</sup>  
Semiconductor Corp.

145 Adams Avenue  
Hauppauge, New York 11788



1N4245  
1N4246  
1N4247  
1N4248  
1N4249

GLASS PASSIVATED RECTIFIER  
1.0 AMPS, 200 THRU 1000 VOLTS

GPR-1A CASE

DESCRIPTION

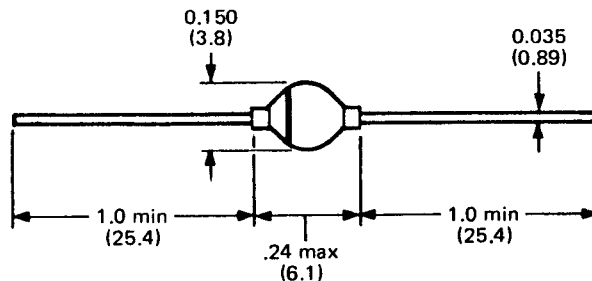
The CENTRAL SEMICONDUCTOR 1N4245 series types are silicon rectifiers mounted in a hermetically sealed, glass passivated package for general purpose applications where high reliability is desired.

MAXIMUM RATINGS (TA=25°C unless otherwise noted)

	SYMBOL	1N4245	1N4246	1N4247	1N4248	1N4249	UNIT
Peak Repetitive Reverse Voltage	VRRM	200	400	600	800	1000	V
DC Blocking Voltage	VR	200	400	600	800	1000	V
RMS Reverse Voltage	VR (RMS)	140	280	420	560	700	V
Average Forward Current (TA=55°C)	IO			1.0			A
Peak Forward Surge Current (8.3ms)	IFSM			50			A
Operating and Storage Junction Temperature	TJ, TSTG			-65 TO +200			°C

ELECTRICAL CHARACTERISTICS (TA=25°C unless otherwise noted)

SYMBOL	TEST CONDITIONS	MIN	TYP	MAX	UNIT
IR	VR=Rated VRRM			1.0	µA
IR	VR=Rated VRRM, TA=125°C			25	µA
VF	IF=1.0A			1.2	V
trr	IF=0.5A, IR=1.0A, Recov. to 0.25A		2.0	5.0	µs



DIMENSIONS IN INCHES (MILLIMETERS)

**Central<sup>TM</sup>**  
**Semiconductor Corp.**

145 Adams Avenue  
Hauppauge, NY 11788 USA  
Tel: (631) 435-1110 • Fax: (631) 435-1824  
www.centralsemi.com