

International IOR Rectifier IRFK3DC50, IRFK3FC50

Isolated Base Power HEX-pak™ Assembly - Half Bridge Configuration

- High Current Capability.
- UL recognised E78996.
- Electrically Isolated Base Plate.
- Easy Assembly into Equipment.

Description

The HEX-pak™ utilises the well-proven HEXFET™ die, combining low on-state resistance with high transconductance. These superior technology die are assembled by state of the art techniques into the TO-240 package, featuring 2.5kV rms isolation and solid M5 screw connections. The small footprint means the package is highly suited to power applications where space is a premium. Available in two versions, IRFK.D... for fast switching and IRFK.F... for oscillation sensitive applications.

$$V_{DS} = 600V$$

$$R_{DS(on)} = 230m\Omega$$

$$I_D = 24A$$

Absolute Maximum Rating

	Parameter	Max.	Units
I_D @ $T_C=25^\circ C$	Continuous Drain Current	24	A
I_D @ $T_C=100^\circ C$	Continuous Drain Current	15	A
I_{DM}	Pulse Drain Current	96	A ①
P_D @ $T_C=25^\circ C$	Maximum Power Dissipation	625	W
V_{GS}	Gate-to-Source Voltage	20	V
V_{INS}	R.M.S. Isolation Voltage, circuit to base	2.5	kV
T_j	Operating Junction Temperature Range	-40 to 150	$^\circ C$
T_{STG}	Storage Temperature Range	-40 to 150	$^\circ C$

Thermal and Mechanical Specifications

	Parameter	Min.	Typ.	Max.	Units
R_{thJC}	Junction-to-Case	-	-	0.20	K/W ②
R_{thCS}	Case-to-Sink, smooth & greased surface	-	0.1	-	K/W
T	Mounting Torque +10%				③
	HEXpak to Heatsink	-	5	-	Nm
	Busbar to HEXpak	-	3	-	Nm
wt	Approximate Weight	-	140	-	g
		-	5	-	oz

Notes:

- ① - Repetitive Rating: Pulse width limited by maximum junction temperature see figure 8.
- ② - Per Module.
- ③ - A mounting compound is recommended and the torque should be rechecked after a period of three hours to allow for the spread of the compound.

IRFK3DC50, IRFK3FC50



Electrical Characteristics @ $T_J = 25^\circ\text{C}$ (Unless otherwise specified)

	Parameter	Min.	Typ.	Max.	Units	Test Conditions	
$B_{V_{DS}}$	Drain-to-Source Breakdown voltage	600	-	-	V	$V_{GS}=0\text{V}$, $I_D=1.0\text{mA}$	
$R_{DS(on)}$	Static Drain-to-Source On-State Resistance	-	185	230	m Ω	$V_{GS}=10\text{V}$, $I_D=15\text{A}$	
$I_{D(on)}$	On-State Drain Current	24	-	-	A	$V_{DS} > I_{D(on)} \times R_{DS(on)}$ max, $V_{GS}=10\text{V}$	
$V_{GS(th)}$	Gate Threshold Voltage	2.0	-	4.0	V	$V_{DS}=V_{GS}$, $I_D=1.0\text{mA}$	
g_{fs}	Forward Transconductance ^④	24	37	-	S	$V_{DS} > 50\text{V}$, $I_D=15\text{A}$	
I_{DSS}	Zero Gate Voltage Drain Current	-	-	0.75	mA	$V_{DS}=V_{DS}$ max, $V_{GS}=0\text{V}$	
		-	-	3.0	mA	$V_{GS}=10\text{V}$, $T_C=125^\circ\text{C}$, $V_{DS}=V_{DS}$ max x 0.8	
I_{GSS}	Gate-to-Source Leakage Forward	-	-	300	nA	$V_{GS}=20\text{V}$	
I_{GSS}	Gate-to-Source Leakage Reverse	-	-	-300	nA	$V_{GS}=-20\text{V}$	
Q_g	Total Gate Charge	-	320	390	nC	$I_D=24\text{A}$, $V_{GS}=10\text{V}$,	
Q_{gs}	Gate-to-Source Charge	-	40	60	nC	$V_{DS}=V_{DS}$ max x 0.8	
Q_{gd}	Gate-to-Drain ("Miller") Charge	-	125	180	nC		
$t_{d(on)}$	Turn-on Delay Time	IRFK3DC50	-	40	-	ns	$V_{DD}=300\text{V}$, $I_D=15\text{A}$, $V_{GS}=10\text{V}$,
		IRFK3FC50	-	45	-	ns	
t_r	Rise Time	IRFK3DC50	-	50	-	ns	$R_{SOURCE}=3.3\Omega$
		IRFK3FC50	-	65	-	ns	
$t_{d(off)}$	Turn-off Delay Time	IRFK3DC50	-	240	-	ns	
		IRFK3FC50	-	320	-	ns	
t_f	Fall Time	IRFK3DC50	-	50	-	ns	
		IRFK3FC50	-	80	-	ns	
L_{DS}	Drain-to-Source Inductance	-	18	-	nH		
C_{iss}	Input Capacitance	-	7.5	-	nF	$V_{GS}=0\text{V}$, $V_{DS}=25\text{V}$,	
C_{oss}	Output Capacitance	-	1.2	-	nF	$f=1.0\text{MHz}$	
C_{riss}	Reverse Transfer Capacitance	-	0.5	-	nF		
	Linear Derating Factor	-	-	5	W/K		

Source-Drain Diode Ratings and Characteristics

	Parameter	Min.	Typ.	Max.	Units	Test Conditions
I_S	Continuous Source Current (Body Diode)	-	-	24	A	
I_{SM}	Pulsed Source Current (Body Diode)	-	-	90	A	
V_{SD}	Diode Forward Voltage	-	-	1.4	V	$V_{GS}=0\text{V}$, $I_S=24\text{A}$, $T_C=25^\circ\text{C}$
t_{rr}	Reverse Recovery Time	270	530	1100	ns	$di/dt=400\text{A}/\mu\text{s}$, $T_J=150^\circ\text{C}$
Q_{rr}	Reverse Recovered Charge	6.0	12.0	25.0	μC	$I_S=24\text{A}$

Notes:

④ - Pulse Width $\leq 300\mu\text{s}$; Duty cycle $\leq 2\%$.



IRFK3DC50, IRFK3FC50

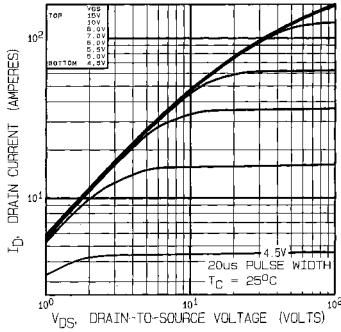


Fig 1. Typical Output Characteristics, $T_C = 25^\circ\text{C}$

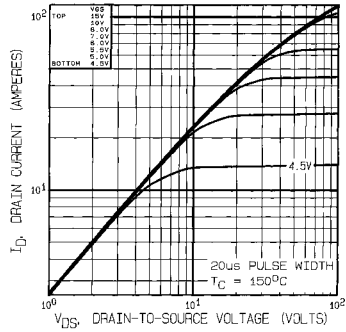


Fig 2. Typical Output Characteristics, $T_C = 150^\circ\text{C}$

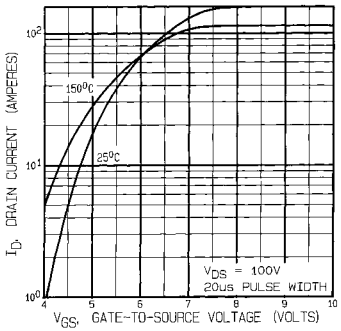


Fig 3. Typical Transfer Characteristics

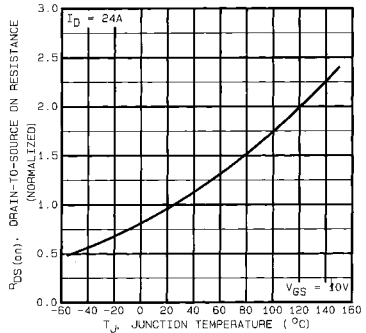


Fig 4. Normalized On-Resistance Vs. Temperature

IRFK3DC50, IRFK3FC50

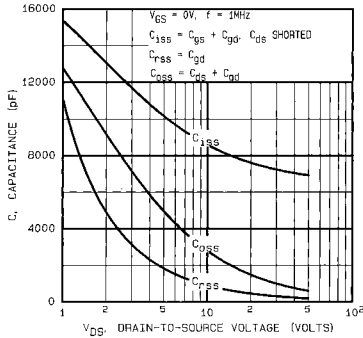


Fig 5. Typical Capacitance Vs. Drain-to-Source Voltage

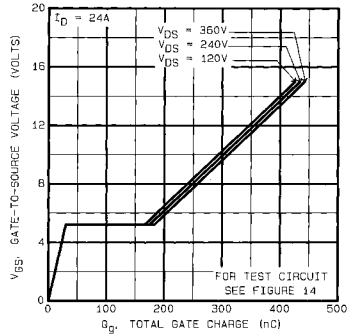


Fig 6. Typical Gate Charge Vs. Gate-to-Source Voltage

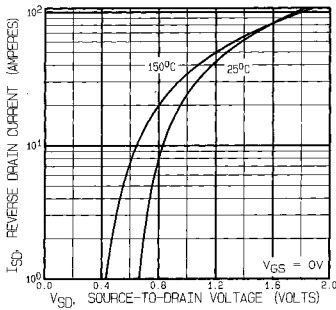


Fig 7. Typical Source-Drain Diode Forward Voltage

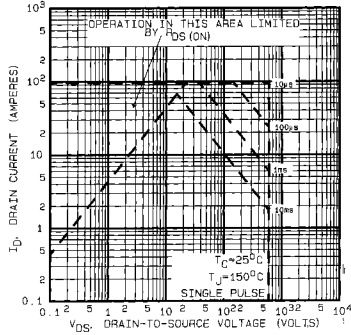


Fig 8. Maximum Safe Operating Area



IRFK3DC50, IRFK3FC50

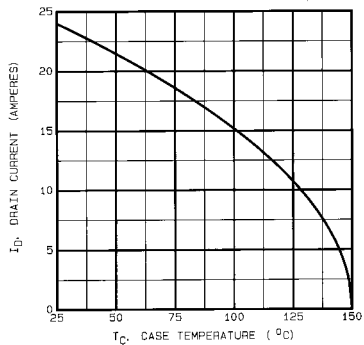


Fig 9. Maximum Drain Current Vs. Case Temperature

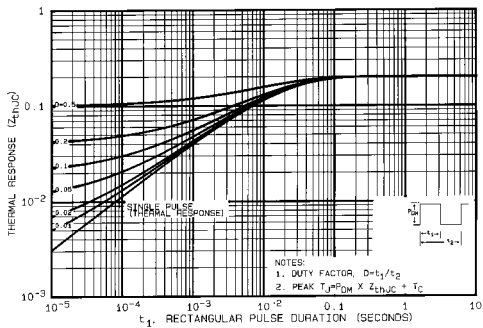


Fig 10. Maximum Effective Transient Thermal Impedance, Junction-to-Case

IRFK3DC50, IRFK3FC50

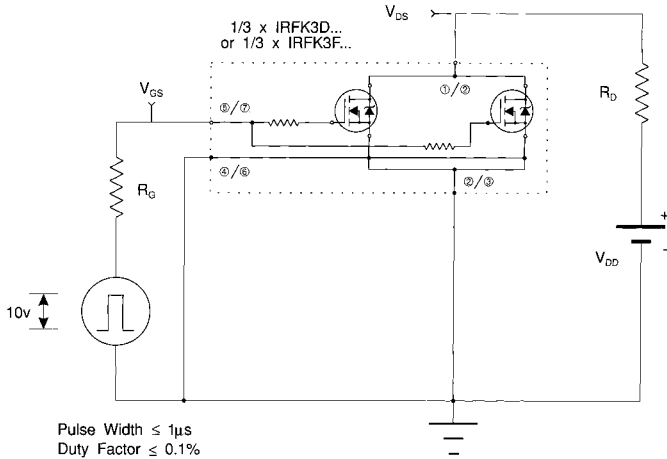


Fig 11a. Switching Time Test Circuit

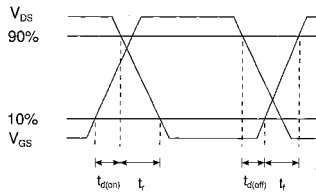
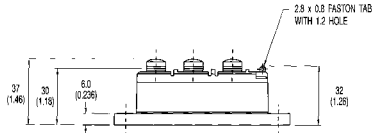
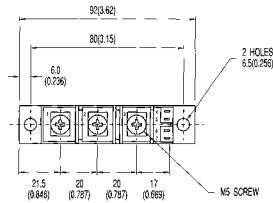
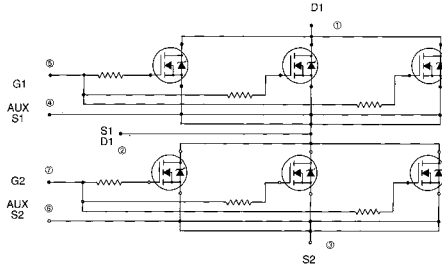


Fig 11b. Switching Time Waveforms



IRFK3DC50, IRFK3FC50

Circuit Configuration and Outline



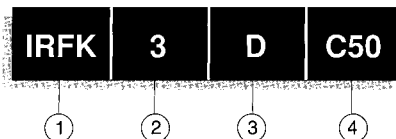
NOTE:
DEVICE IS SUPPLIED WITH
AUXILIARY LEADS 200(7.87) LONG

All dimensions in millimetres (inches)

IRFK3DC50,IRFK3FC50



Part Numbering



1. - HEX-pak Module.
2. - Number of arms of bridge.
3. - D - Fast switching.
 - F - Oscillation resistant for sensitive applications.
4. - Voltage code:-
 - 054 - 60V
 - 150 - 100V
 - 250 - 200V
 - 350 - 400V
 - 450 - 500V
 - C50 - 600V

WORLD HEADQUARTERS: 233 Kansas St., EL SEGUNDO, California 90245, USA. Tel:(213) 772-2000. Tlx:664464. Fax:(213) 772-9028
EUROPEAN HEADQUARTERS: Hurst Green, OXTED, Surrey RH8 9BB, UK. Tel:(0883) 713215. Tlx:95219. Fax:(0883)714234.

CANADA: 101 Bentley St., Markham, ONTARIO L3R 3L1. Tel:(416)475-1897. Tlx:06-966-650. Fax:(416)475-9801
CZECHOSLOVAKIA: Macurova 19/1565, Box 30, 149 00 PRAGUE. Tel:(2) 792 6831. Fax:(2) 792 6831.

DENMARK: P.O. Box 70, Krogshoejvej 51, DK-2880 BAGSVAERD. Tel: (45) 44 37 71 50. Fax (45) 44 37 71 52.

FRANCE: 123 Rue de Petit Vaux, 91360 EPINAY sur ORGE. Tel:(1)64.54.83.29. Tlx:600943. Fax:(1)64.54.83.30.

FINLAND: Biliskogsvägen 19, 02580 Sundela St. Tel:(0) 262 8144. Fax:(0) 262 8150.

GERMANY: Saalburgerstr. 137, D-6390 BAD HOMBURG. Tel:(6)172 37056. Tlx:410404. Fax:(6)172 37065.

HUNGARY: Szent Istvan Park 15, H-1137 BUDAPEST. Tel:(1) 1298 822. Fax:(1) 1298 822.

HONG KONG: 202 Peter Building, 60 Queens Road Central, HONG KONG. Tel:(85) 252 36355. Fax: (85) 284 52908.

ITALY: Via Liguria 49, 10071 Borgaro, TORINO. Tel:(0)11470 14 84. Tlx:221257. Fax:(0)11470 42 90.

Via Zucca 3, 20017 Rho MILANO. Tel:(02)93 50 36 50. Fax:(02)93 50 36 55.

Via Arno 1, 40139 BOLOGNA. Tel:(05)149 33 07. Fax:(05)149 54 80.

INDIA: 31 Greenacre, 5 Union Park, Khar (W), BOMBAY 400 052. Tel:(022)335026/533779/540242. Tlx:011-71481.

JAPAN: K & H Bldg. 2F, 3-30-4 Nishi-kebukuro, Toshima-ku, TOKYO, Japan 171. Tel:(03)983 0641. Fax:(03)983 0642.

SINGAPORE: HEX 10-01 Fortune Centre, 190 Middle Road, SINGAPORE 0718. Tel:(65)336 3822/337 4695/336 6286. Fax: (65)337 4692.

SWEDEN: Box 86, S-162 12 Vallingby 1, STOCKHOLM. Tel:(08)870335. Fax:(08)874242.

SWITZERLAND: CH-8032 ZURICH, Kirchenweg 5. Tel:(0)1286 8702/8668. Fax:(0)1383 5108/2379.

U.S.A.:

Central Zone: 2401 Plum Grove Road, Suite 111, PALATINE, IL60067. Tel:(312)397-2002. Fax:(312)397-0114.

Eastern Zone: 71 Grand Avenue, PALMBADES PARK, NJ07850. Tel:(953)943-4554. Fax:(201)943-5754.

Southern Zone: 800 Office Plaza Blvd., Suite 401, KISSIMMEE, FL32743. Tel:(407)833-2383. Fax:(407)933-2293.

Western Zone: 222 Kansas Street, EL SEGUNDO, CA90245. Tel:(213)607-8886. Fax:(213)640-6533.

Sales Offices, Agents and Distributors in Major Cities throughout the World.

In the interest of product improvement INTERNATIONAL RECTIFIER reserves the right to change specifications at any time without notice.

MJW/1/82