

New Jersey Semi-Conductor Products, Inc.

20 STERN AVE.
 SPRINGFIELD, NEW JERSEY 07081
 U.S.A.

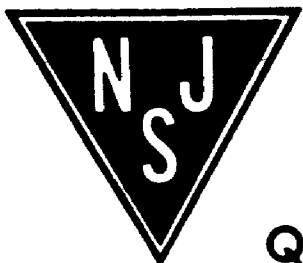
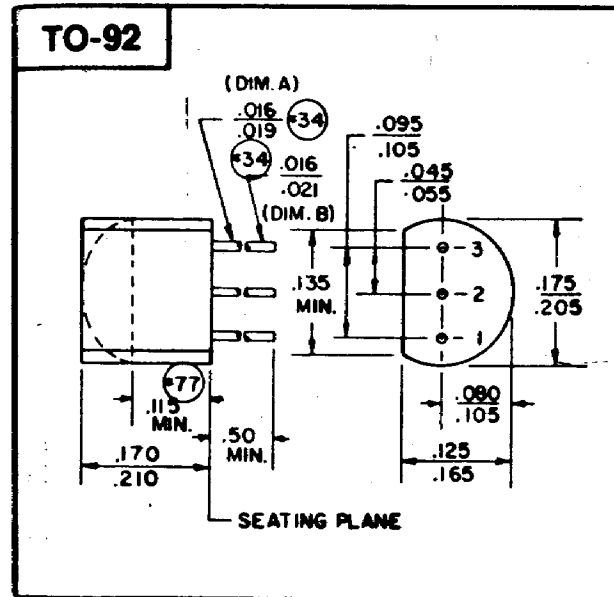
TELEPHONE: (201) 376-2922
 (212) 227-6005
 FAX: (201) 376-8960

LOW LEVEL AMPS

Type No.	Case Style	V _{CB0} (V) Min	V _{CE0} (V) Min	V _{EB0} (V) Min	I _{CB0} (nA) Max	V _{CB} (V)	h _{FE} & I _C & V _{CE}			V _{CE(SAT)} (V) Max	V _{BE(SAT)} (V)		I _C (mA)	C _{ob} (pF) Max	f _T (MHz)		t _{off} (ns) Max	NF (dB) Max	Test Conditions
							Min	Max	I _C (mA)		V _{CE} (V)	Min			Max	Min			
PN4248	TO-92	40	40	5	10	40	50	0.1	5	0.25			10	6					
PN4249	TO-92	60	60	5	10	40	100	300	0.1	5	0.25		10	6					
PN4250	TO-92	40	40	5	10	40	250	700	0.1	5	0.25		10	6				2	4
PN4250A	TO-92	60	60	5	10	50	250	700	0.1	5	0.25		10	6				2	4

TEST CONDITIONS:

(1) I_C = 10 μA, V_{CE} = 5V, f = 10 Hz–15.7 kHz. (2) I_C = 10 μA, V_{CE} = 5V, f = 10 kHz. (3) I_C = 100 μA, V_{CE} = 5V, f = 10 Hz–15.7 kHz. (4) I_C = 20 μA, V_{CE} = 5V, f = 10 Hz–15.7 kHz.



Quality Semi-Conductors